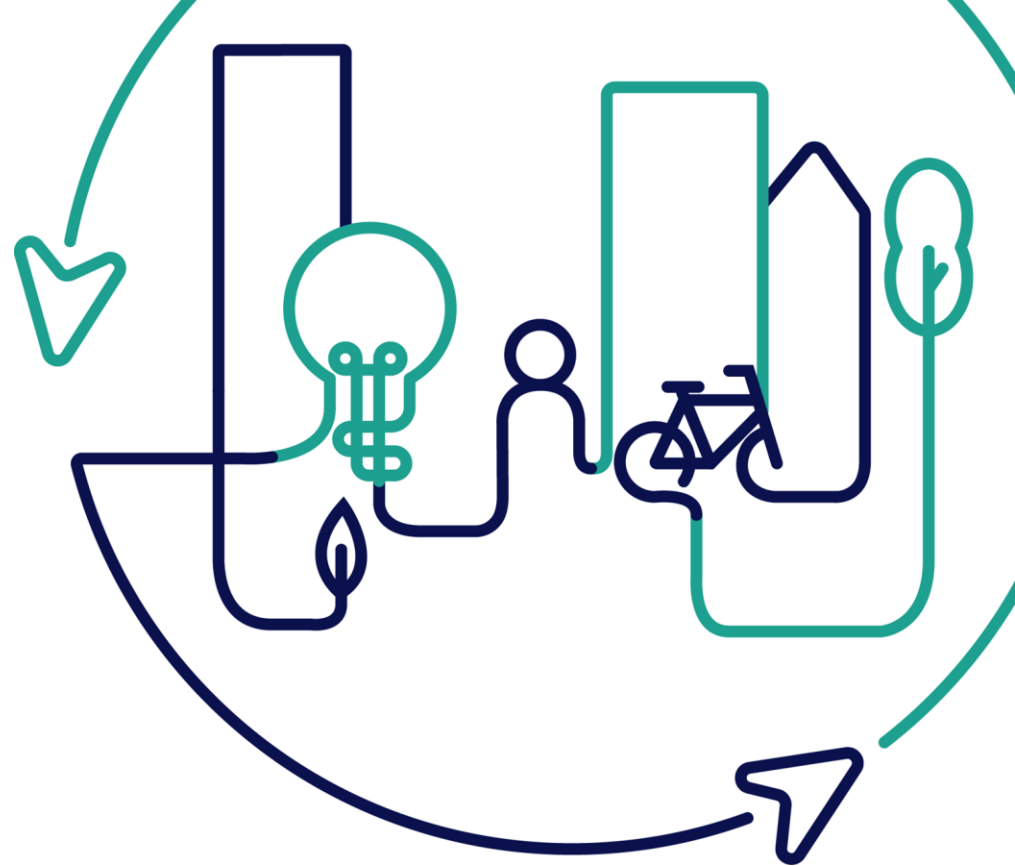


# EUROPEAN U R B A N INITIATIVE

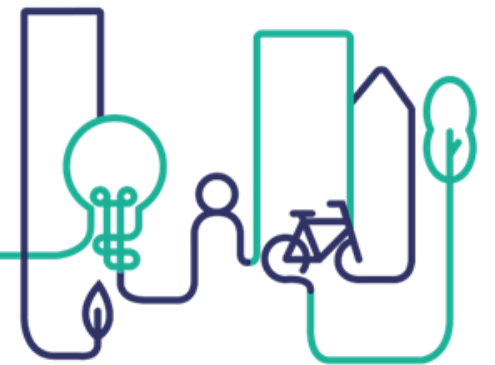


Co-funded by  
the European Union

# How to run a test bed

## Insights from Oulu and Kuopio

Welcome!



Co-funded by  
the European Union



# Session Plan

**14:00**

**Introduction**

**14:10**

**Presentations from  
Oulu & Kuopio**

**14:35**

**Panel Q & A**

**14:50**

**Wrap-up & Close**



# Session Aims

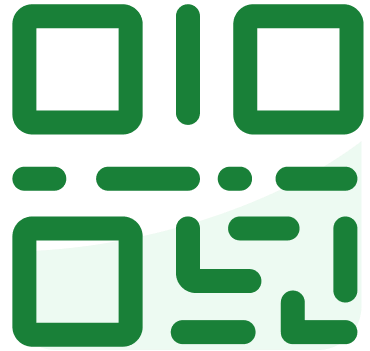
1

**To share insights from Oulu and Kuopio, based on their experience of setting up and operating test beds aimed at optimising local cross sectoral assets, unlocking innovation and generating value**

2

**To provide participants an opportunity pose questions to the speakers and to share ideas.**

# slido



**Join at [slido.com](https://slido.com)  
#2470140**

ⓘ Start presenting to display the joining instructions on this slide.

slido



**What is expected from the company or partner participating in the testing activities?**

① Start presenting to display the poll results on this slide.

# slido



**What is the direct impact that cities can expect from providing test bed activities, besides serving citizens with better solutions?**

① Start presenting to display the poll results on this slide.


slido



**What type of benefit do test bed activities provide for companies?**

① Start presenting to display the poll results on this slide.



A white speech bubble with a circular arrow pointing clockwise around the text. The bubble has a tail pointing to the left. The text inside is in a bold, white, sans-serif font.

**Over to Jari &  
Maria from  
BusinessOulu!**



**BUSINESSOULU**

**OULU**

# BusinessAsema as a testbed

Jari Jokisalo, Specialist, BusinessOulu

24.5.2024



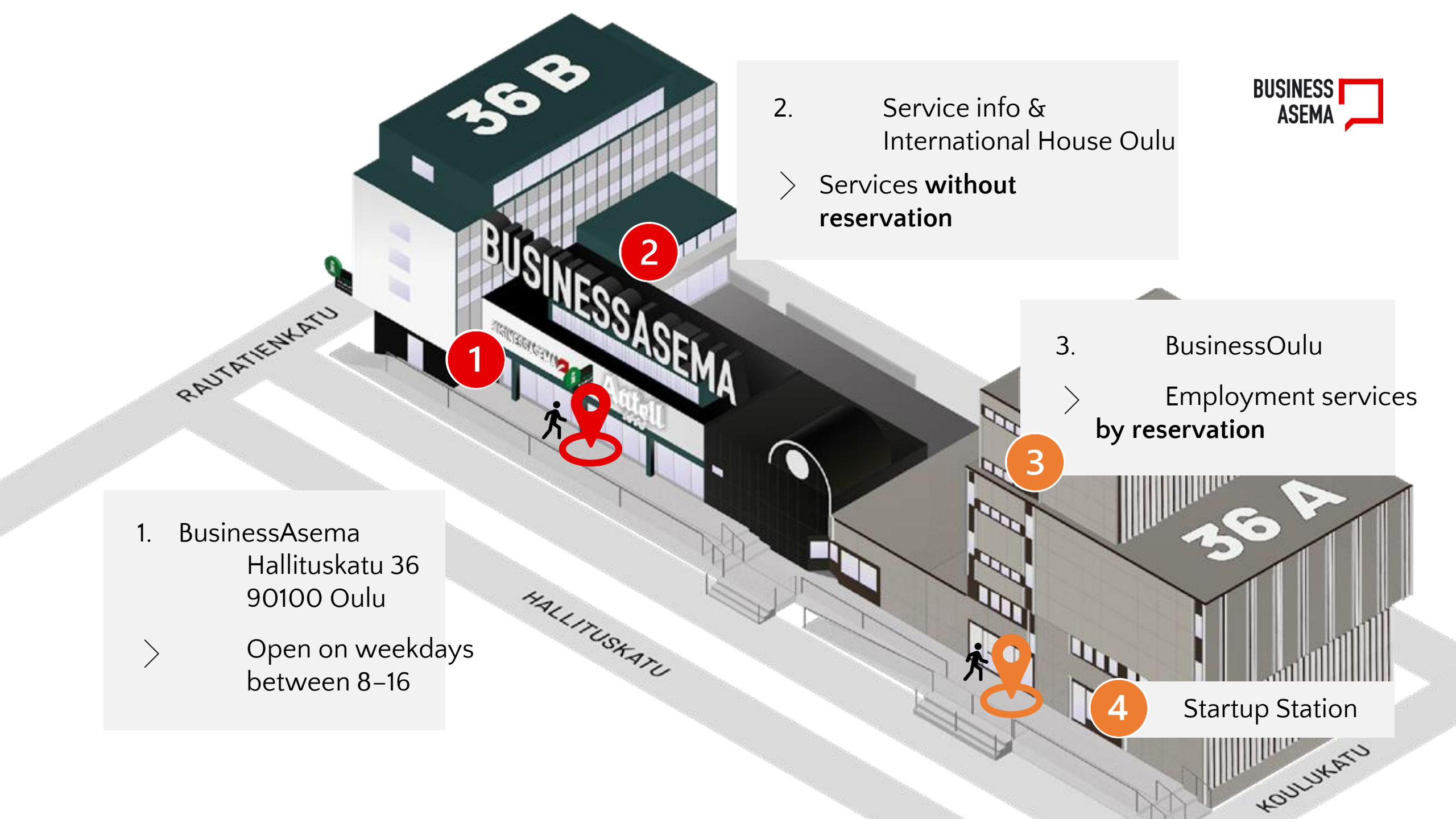
Co-funded by  
the European Union



People. Companies.  
Ideas.







1. BusinessAsema  
Hallituskatu 36  
90100 Oulu

> Open on weekdays  
between 8–16

2. Service info &  
International House Oulu

> Services **without**  
reservation

3. BusinessOulu

> Employment services  
by reservation

4 Startup Station

# Versatile selection of services for all people in Oulu

**Antell**  
1880

  
BUSINESSOULU

**FAB LAB**

 Oulun seudun  
Uusyritys-  
keskus

 TE-palvelut  
tjänster | services

**OSAO**

 Yrittäjäkylä  
Yrittäjäkylä

**Kela** 

**4H Oulu**

**oia**  
OULU INNOVATION ALLIANCE

 Työllisyyden  
kuntakokeilut

**OSKE**  
Oulun osaamiskeskus

 **Pohde**  
Pohjois-Pohjanmaan  
hyvinvointialue

 YRITYSKUMMIT®  
Orosuomen tukena

 **OULU**

 **INTERNATIONAL  
HOUSE OULU**

 **NY  
NUORTEN  
YSTÄVÄT**

 **STARTUP  
STATION**

 **SIMHE  
OAMK**

## Services without reservation

- **Employment counselling**
- **Business counselling** and help in establishing, developing, and financing a business
- **Business advisors** to meet
- **Recruitment support** for employers
- **Help in digital job seeking**
- **Career and education coaching for job seekers**
- **Business mentors** to support and spar entrepreneurs
- **Counselling for immigrants**
- **Housing advice**
- **Financial advice**
- **Kela services**
- **Villa Victor**
- **OSAO**

# Trials and testing at BusinessAsema



BusinessAsema is a platform for companies to try out, test and develop new solutions.

**SUGGEST AN IDEA FOR TRIALS:**  
[jari.jokisalo@businessoulu.com](mailto:jari.jokisalo@businessoulu.com)



An intelligent property.  
Agile pilots.  
Real time Digital Twin.  
Common data platform.  
Proptech.





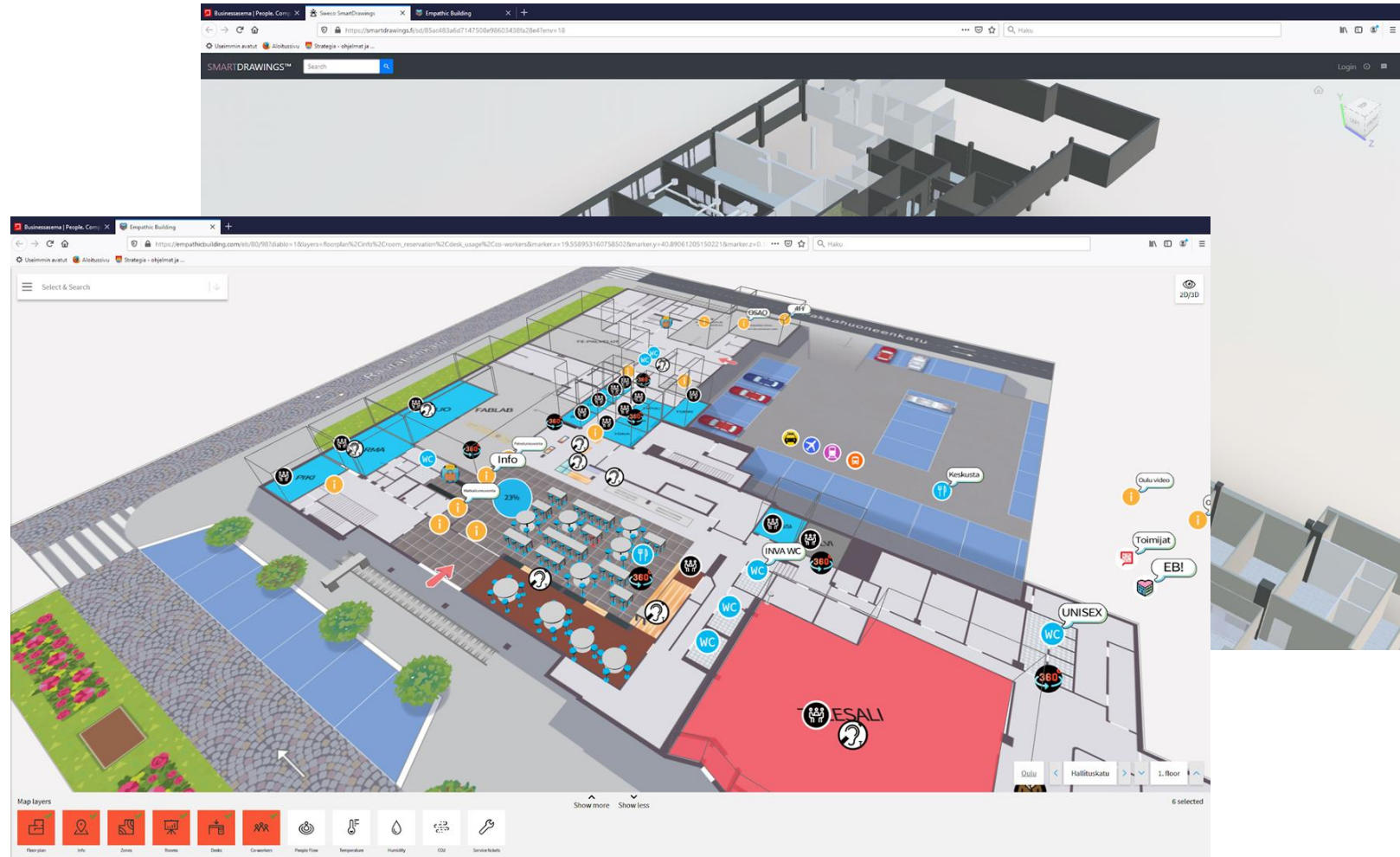
# BusinessAsema – Digital Twins

Haltian:

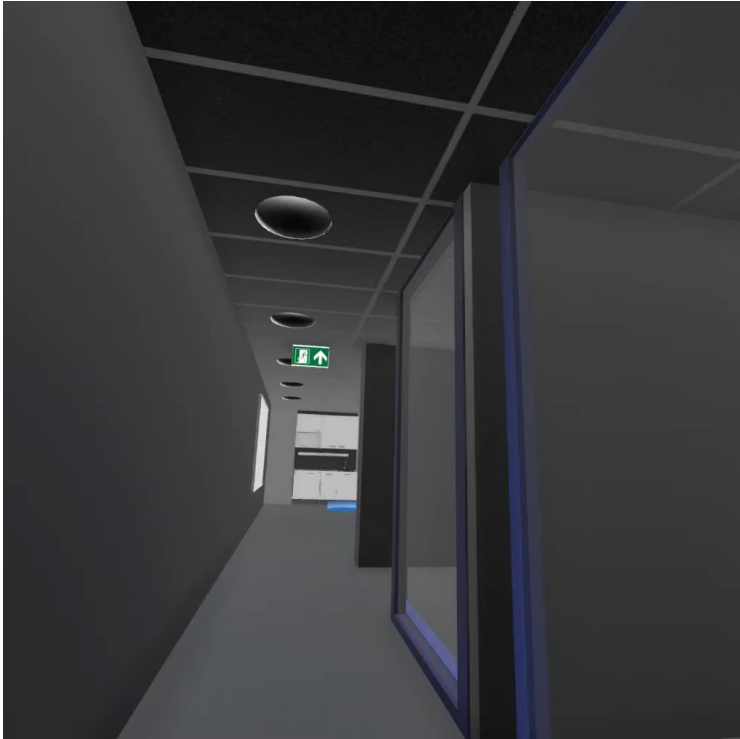
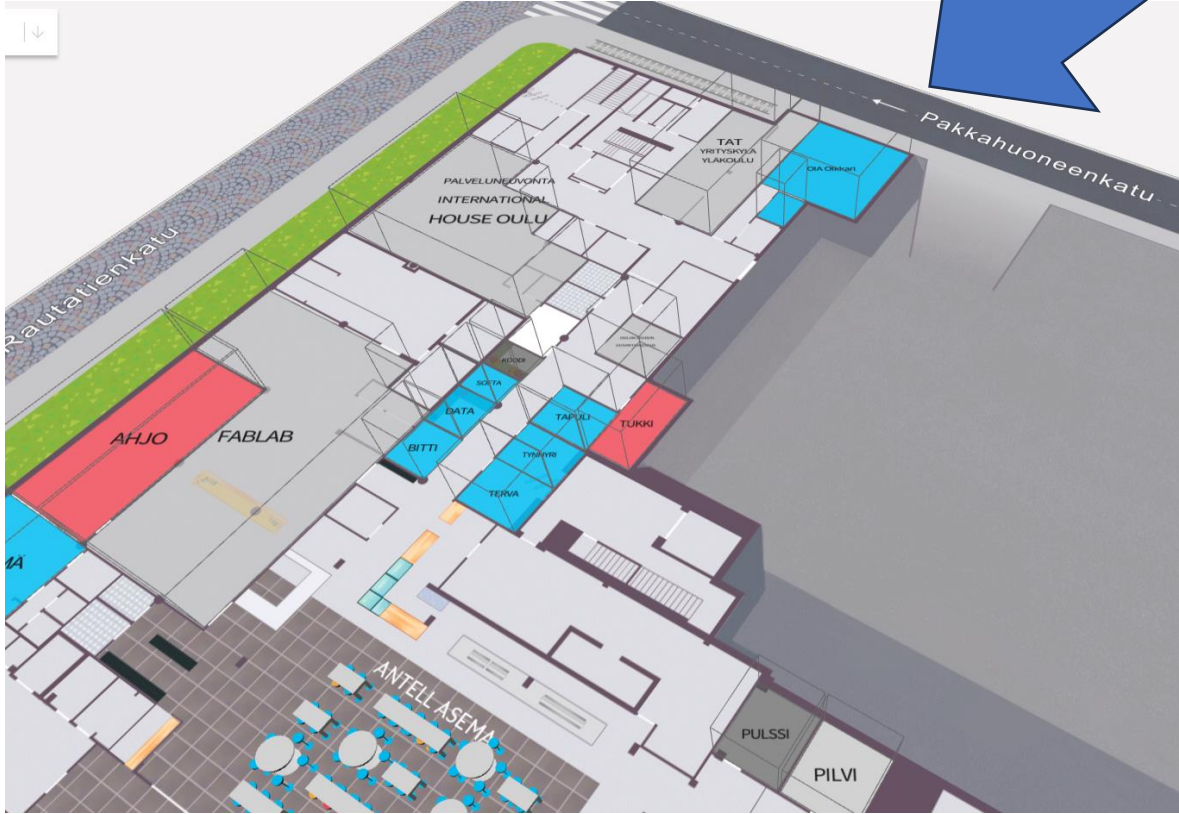
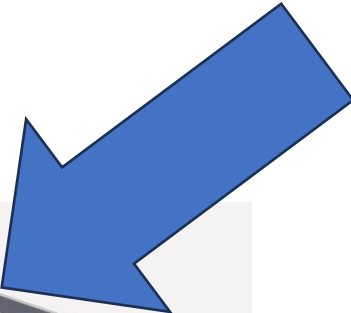
BusinessAsema has been used as an open iot and digital twin reference platform to develop further the Emphatic Building, opening it to new integrations, utilizing 130 iot sensors.

Other digital twins:

Sweco ltd – property technology  
Fab lab Digital Twin (student work)  
Olkkari Digital Twin (EMETA project)



# OIA Olkkari space







TECHNOPOLIS



**Oulu Innovation Alliance** offers the best innovation partnership, inviting companies to network, solve challenges, and boost their product development in the "OIA living room" at BusinessAsema





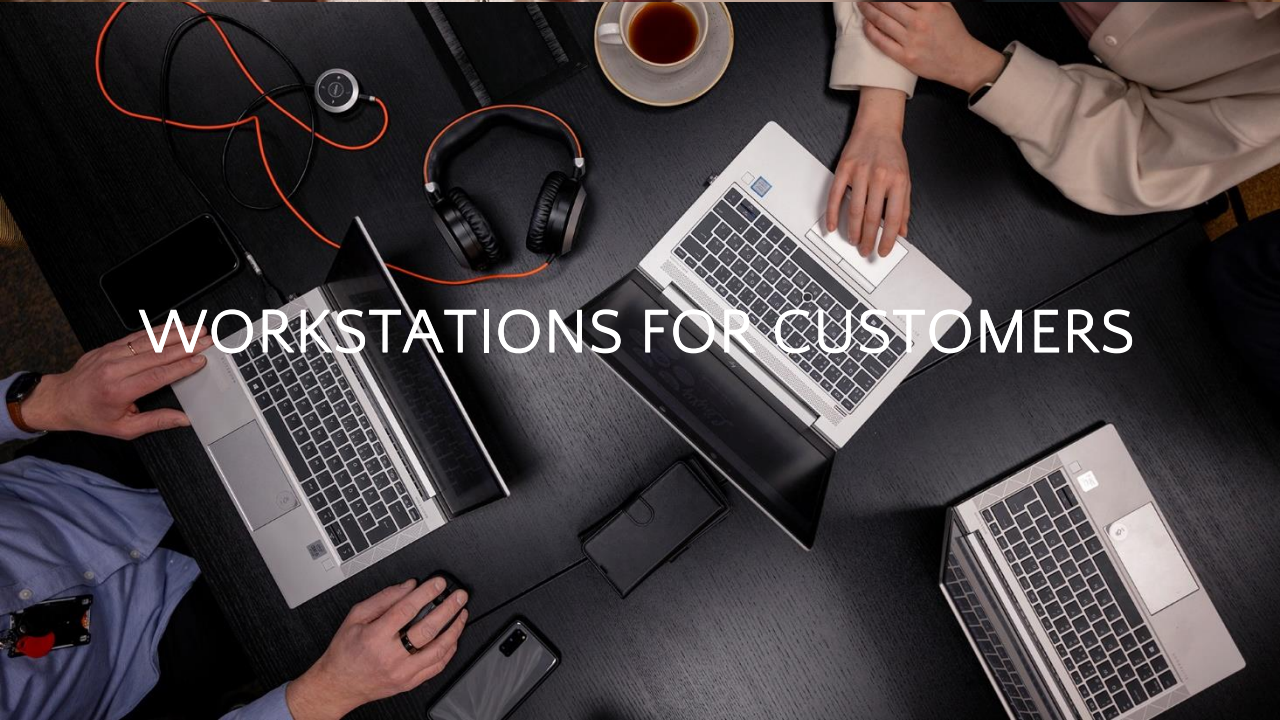
CAFÉ AND RESTAURANT



OPEN WORKSPACES



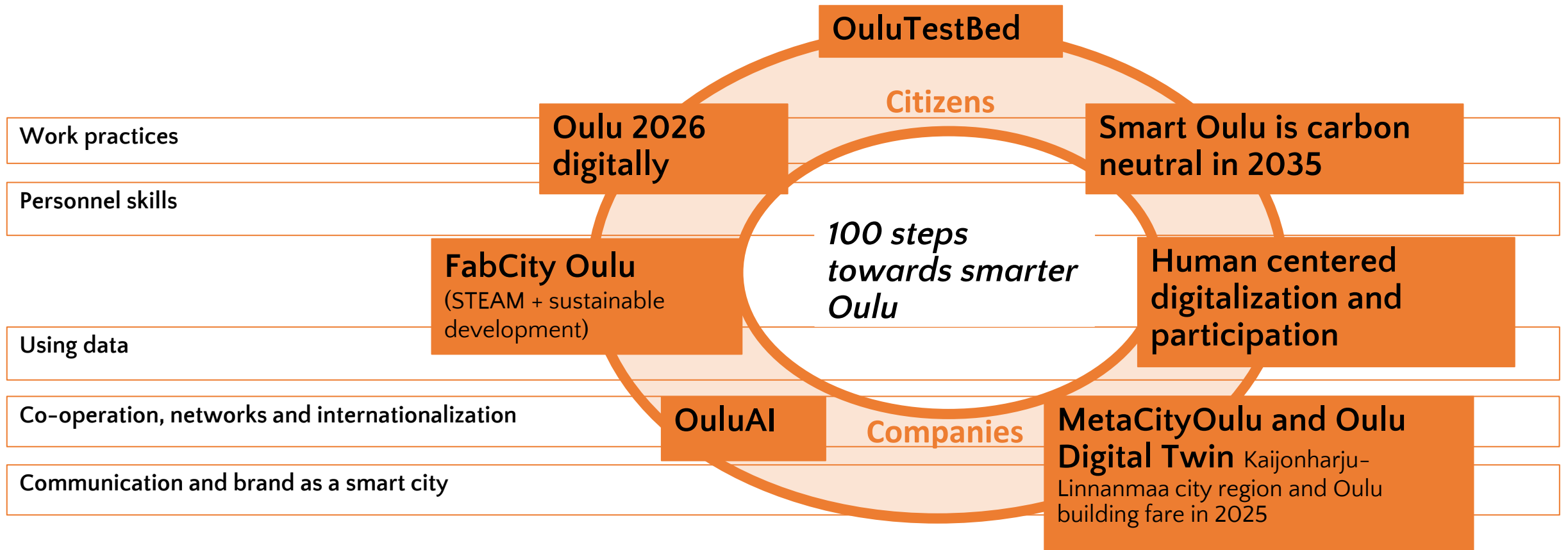
EVENTS AND COACHING



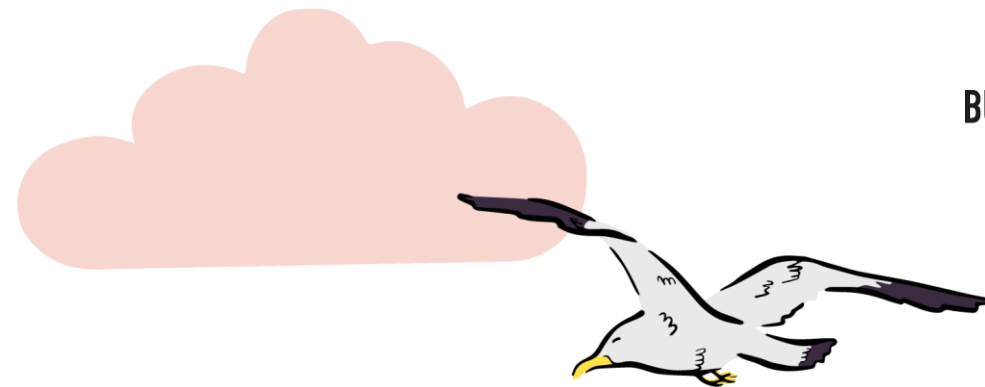
WORKSTATIONS FOR CUSTOMERS



# Smart City Oulu –program 2024–2028: 100 Steps Towards Smarter Oulu



Smart City Oulu –program consists of seven main themes and five crosscutting ways of doing things. Program has 100 different tasks to achieve a smarter Oulu. Those steps are divided to 50 single actions and 50 company pilots and tests in real city environment.



## **Helena Poukkanen**

COMMUNITY MANAGER

## **Jannika Leinonen**

EVENTS

POP-UP SERVICES

## **Jari Uusitalo**

FABLAB

## **Jari Jokisalo**

SMART BUILDING

 [firstname.lastname@businessoulu.com](mailto:firstname.lastname@businessoulu.com)

---

[businessasema.com](http://businessasema.com) | [businessoulu.com](http://businessoulu.com)

[info@businessasema.com](mailto:info@businessasema.com)



**Co-funded by  
the European Union**



**Let's hear  
from Arto  
and  
Kuopio!**

KUOPIO

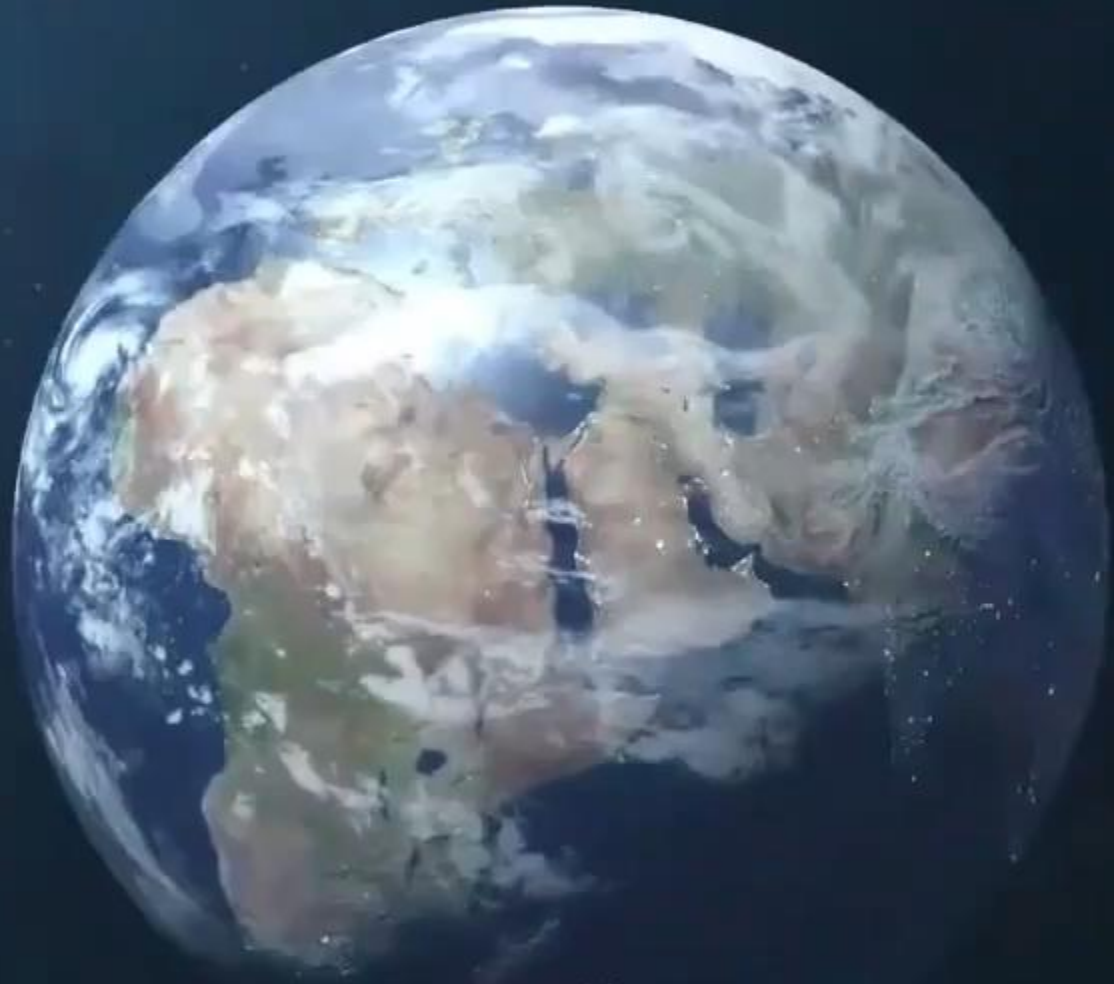
# How to run a test bed: Insights from Kuopio

Arto Holopainen  
Chief Innovation Officer  
City of Kuopio

EUI Capacity Building Event, Finland | 29-30 May 2024  
Deep dive: How to run a test bed







# Kuopio – the Capital of Good Life

Kuopio is the center of Eastern Finland – the Capital of Lakeland – and one of the most dynamic cities when it comes to residential development, attractiveness, job opportunities and population growth.



THE **8<sup>TH</sup>**  
LARGEST CITY  
IN FINLAND

**25,000**  
STUDENTS

A POPULATION OF  
**124,000**  
RESIDENTS

THE LARGEST NATIONAL  
CITY PARK WITH  
A SURFACE AREA OF  
**7,200**  
MILLION SQUARE METRE



**112**  
DIFFERENT NATIONALITIES  
LIVING IN KUOPIO

SURROUNDED  
BY OVER  
**100**  
LAKES

THE HAPPIEST  
RESIDENTS AMONG  
THE LARGEST  
CITIES IN FINLAND

THE IMAGE OF KUOPIO

THE **2<sup>ND</sup>**  
MOST POSITIVE  
(AMONG FINNISH CITIES)



**55,000**  
JOBS

THE CITY CENTER  
OF KUOPIO IS

THE LIVELIEST  
IN FINLAND



**8,000**  
COMPANIES

NATIONAL  
AGREEMENT

IN HEALTH AND  
WELLBEING  
ECOSYSTEM AND  
WATER CLUSTER



KUOPIO250

2025

# KUOPIO's 250<sup>TH</sup> ANNIVERSARY

Journey from the past  
into the future





## LIVING LAB

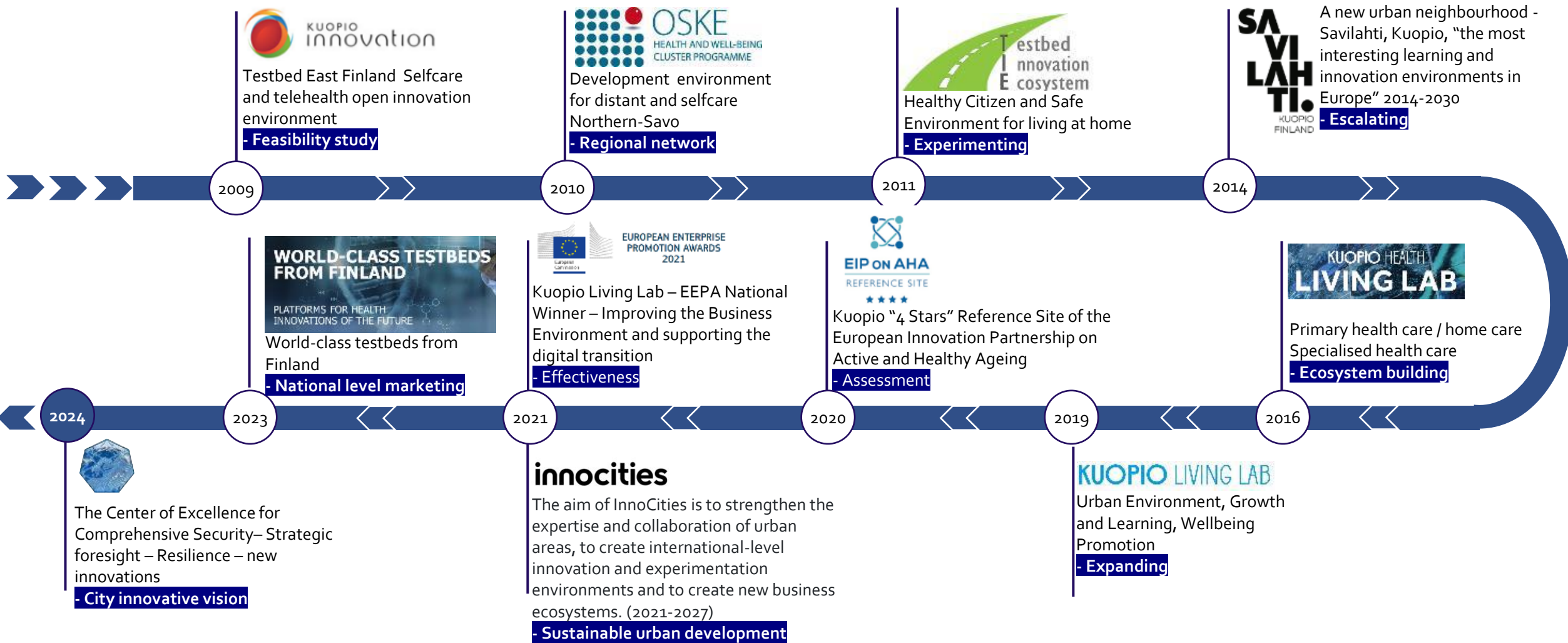
“Living Lab operates as an authentic co-creation environment to enable collaboration between citizens, industry, academia and public sector”

Quadruple Helix – Open Innovation 2.0





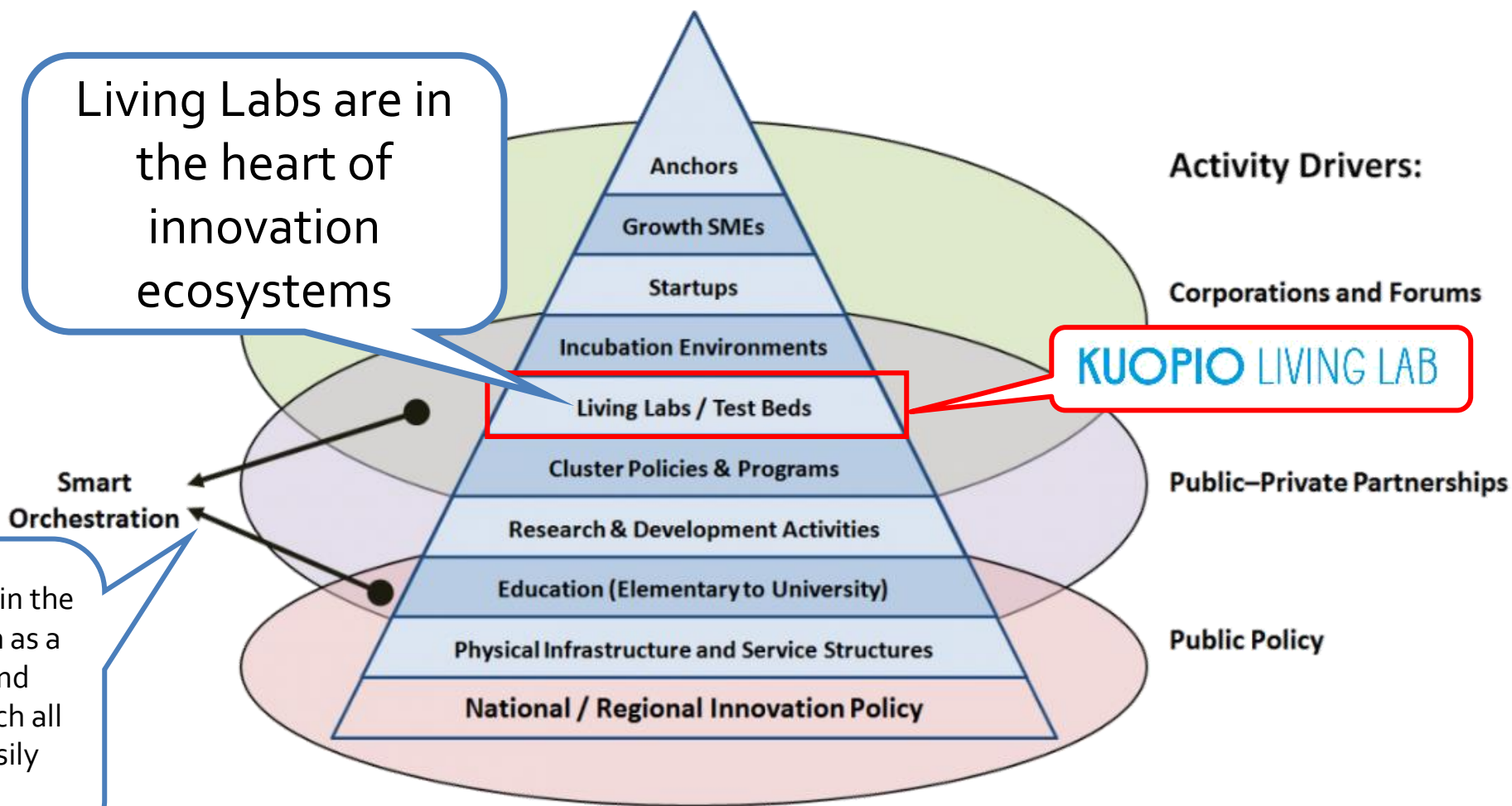
# Kuopio Living Lab journey & milestones





**Why?**

# Living lab in regional innovation ecosystem



# KUOPIO LIVING LAB

-> 2022

City of Kuopio

Urban Environment  
Growth and Learning

Social and Health  
Wellbeing Promotion

Kuopio University Hospital

Specialised medical care  
All medical specialities

Savonia University of Applied Sciences

Feasibility check  
Development support

Experimental Culture, Co-Creation, Crowdsourcing



# KUOPIO LIVING LAB

2023 ->

City of Kuopio

Urban Environment  
Growth and Learning

~~Social and Health~~  
Wellbeing Promotion

Wellbeing services county of North Savo  
Kuopio University Hospital

Specialised medical care  
All medical specialities

Social and Health

Savonia University of Applied Sciences

Feasibility check  
Development support

Experimental Culture, Co-Creation, Crowdsourcing

Health and social  
services reform

# How?

# How we do it?

## - advertise

Regional level



National / ecosystem level

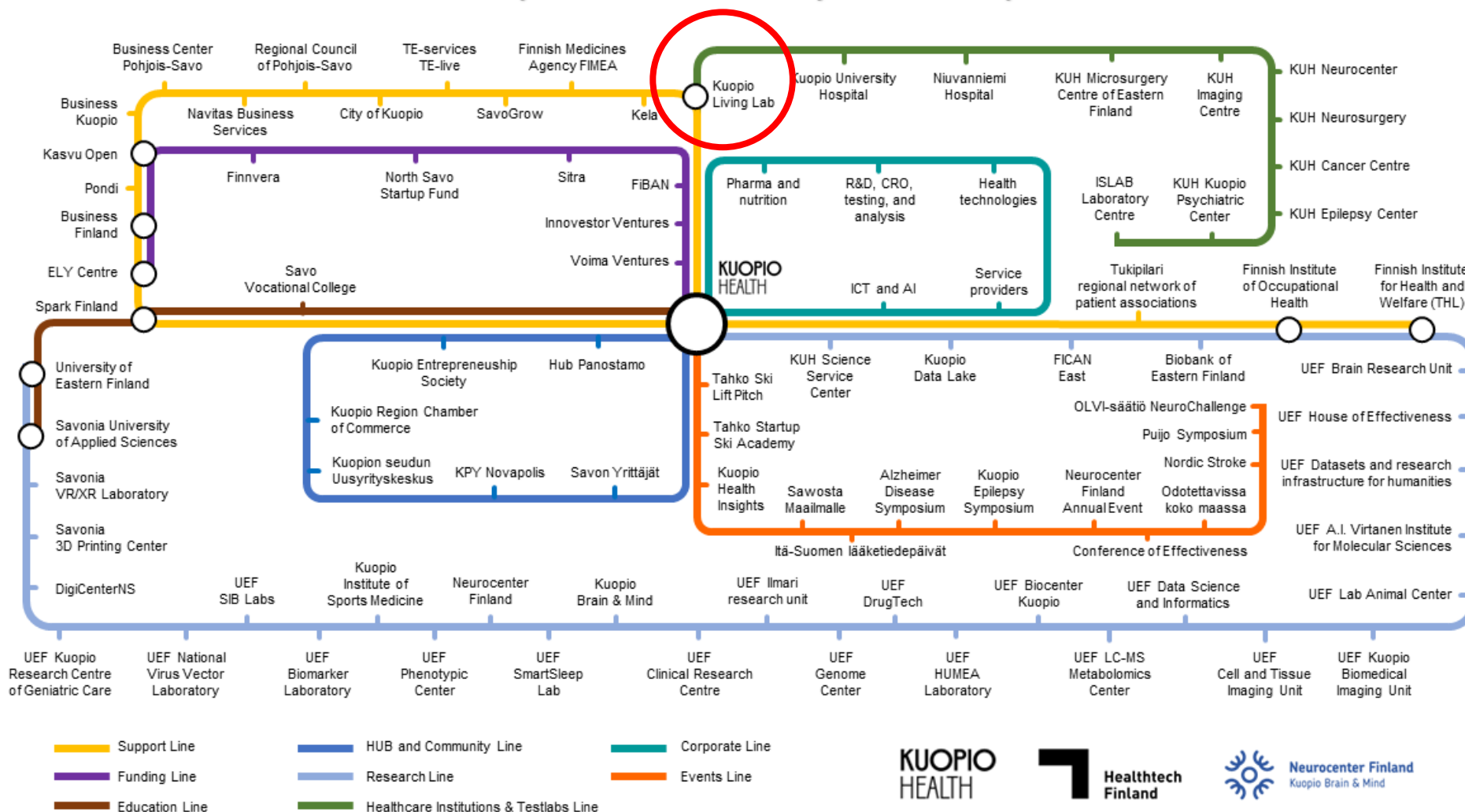


International level



# Advertising as part of larger ecosystem

## Kuopio Health Ecosystem Map



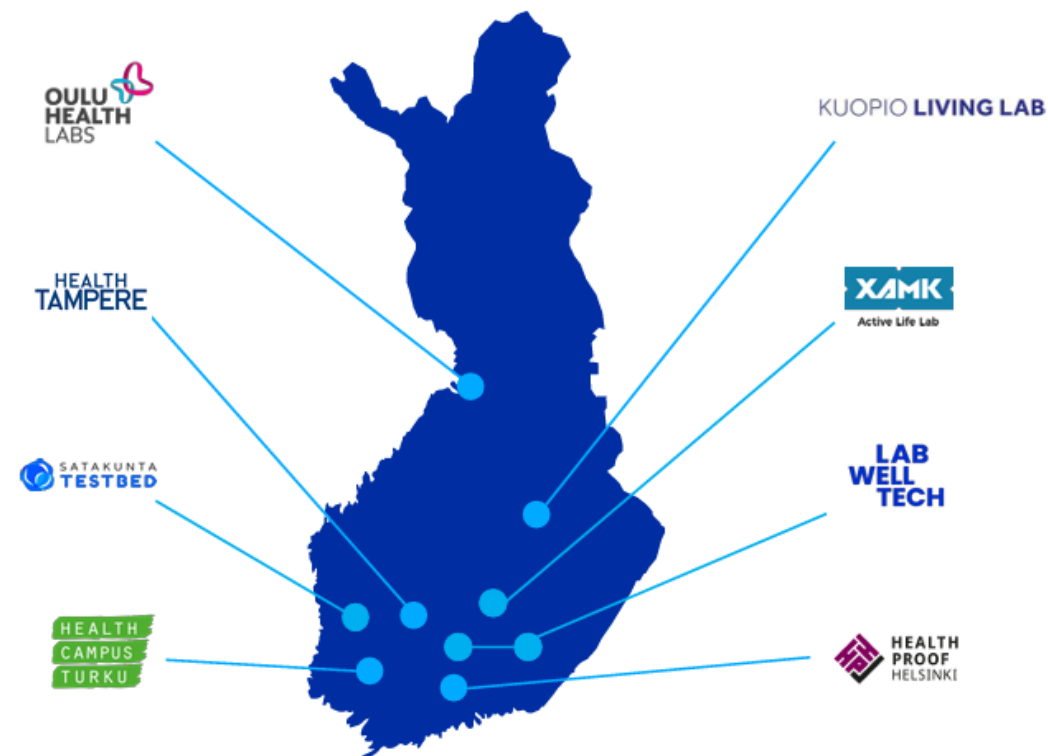
# Advertising as part of national visibility to abroad – Partnerships - Collaboration

**WORLD-CLASS TESTBEDS FROM FINLAND**

PLATFORMS FOR HEALTH INNOVATIONS OF THE FUTURE

BUSINESS FINLAND | INVEST IN FINLAND

## 8 HEALTHCARE TESTBEDS IN FINLAND





# How we do it?

## - who gets to test

1

CONTACT

KUOPIO LIVING LAB

### CRITERIA EXAMPLES

- MATCH TO CITY'S GOALS
- GENUINE NEED
- SOLVES A REAL CHALLENGE
- SCALABILITY
- COSTS / FUNDING
- DURATION
- NEED FOR PARTNERS
- DIGITAL / PHYSICAL / IDEA

2

INPUT

- INNOVATOR INFORMATION
- NEEDS AND EXPECTATIONS FOR COLLABORATION

3

RESPONSE

- INITIAL FEASIBILITY CHECK
- RESPONSE



# How we do it?

## - Governance

Connection to the city of Kuopio's strategy

Coordinated under the Mayor

Contact point

Coordinators in service areas

Strategy Director

Business Development Director

Chief Innovation Officer

Business Promotion Officer

Strategy and Development

Business Development

Urban Environment

Growth and Learning

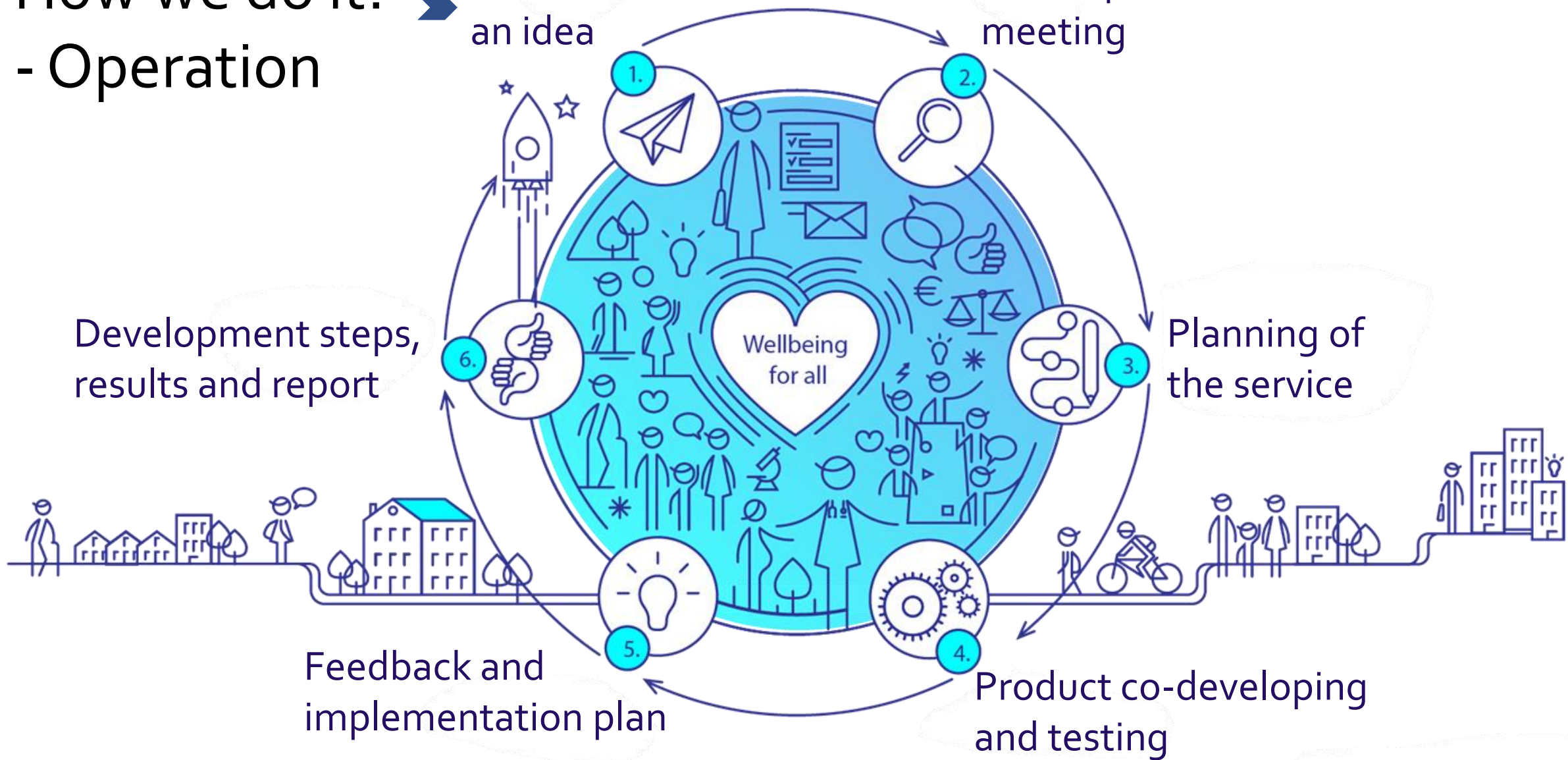
Wellbeing Promotion



# How we do it? - Operation

I have an idea

Start-up meeting



Development steps,  
results and report

Planning of  
the service

Feedback and  
implementation plan

Product co-developing  
and testing



# How we do it?

## - funding

### Kuopio Living Lab operation funding

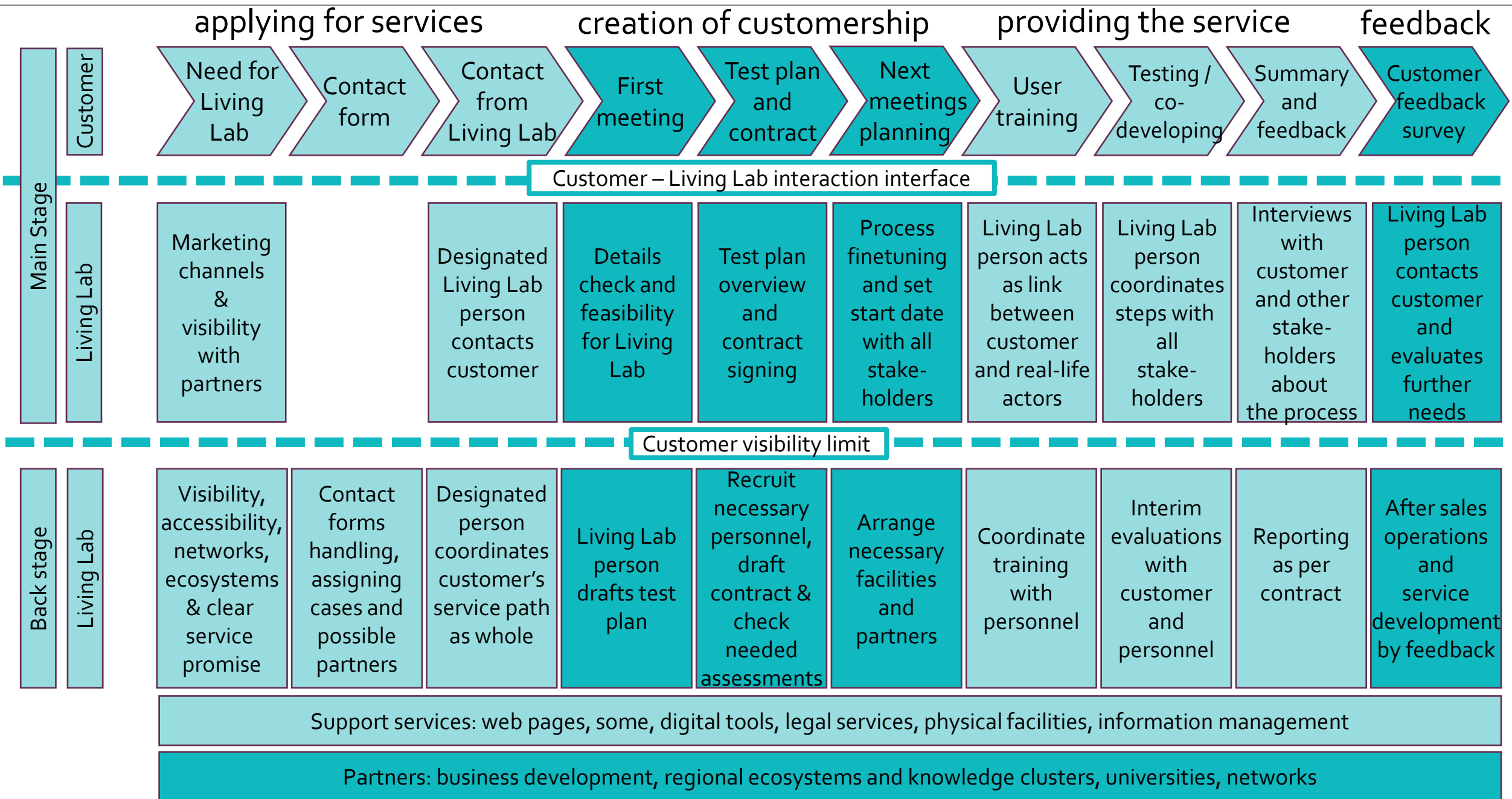
1. All the stakeholders covers own costs, "money does not move"
2. Innovator / company covers city's costs based on needed services, for example used personnel workhours or data protection impact assessment costs
3. Testing / development is done within e.g. EU funded project
4. Strategic for city, city covers funding
5. Other funding, for example European digital innovation hub funding (Digital Europe program)

Funding during Kuopio Living Lab operational model building

- City of Kuopio's own funding
- Partners funding (for example University of applied sciences, University hospital)
- Funding from programs like European regional development fund, European social fund, Horizon Europe



**What do we  
exactly do?**



Source: Customer-oriented service path. Case: Kuopio Living Lab, Päivi Tenhunen, 2021 (Thesis)



A person is holding a smartphone in their right hand, displaying a map application. The phone screen shows a street grid with a red location pin. A glowing, white wireframe digital overlay of a cityscape and a tall tower is superimposed on the scene, extending from the phone towards the left. The background is a blurred outdoor setting with people and buildings.

What do we exactly do?

Co-creation, co-development

Real world environments

# Results / Impacts



# Savilahti - Robot bus pilot



The robot bus pilot is a joint demonstration of capabilities by stakeholders in the Savilahti area and an excellent example of the expertise cluster's ability to adopt new innovations.







# Luola – exceptional construction

A unique rock cave is under construction in the district of Savilahti and will hold a sports and event centre and a civil defence shelter. Known as Luola (the Cave in Finnish), the centre is expected to open to the public in late summer 2024.





Next steps

Centre of Excellence for Comprehensive Security

Cities need solutions to global security challenges

Sustainable urban development solutions and pilots

Supports the city's innovation-driven growth







Living Lab Concept is one step for a city towards smart and healthy society

Strategic level approach

Well-coordinated services

Open-minded governance

Solutions for the genuine need



KUOPIO

Thank you!

[arto.holopainen\(at\)kuopio.fi](mailto:arto.holopainen(at)kuopio.fi)

**FREEDOM  
TO CHOOSE**

**Together**

**Responsibly**

**Inspiringly**

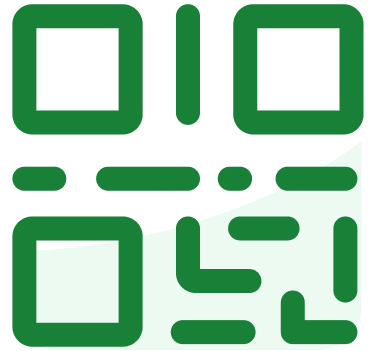
**Openly**





**Questions  
&  
Comments**

# slido



**Join at [slido.com](https://slido.com)  
#2470140**

ⓘ Start presenting to display the joining instructions on this slide.



slido



**What are your key 3 takeaways?**

① Start presenting to display the poll results on this slide.



**What's next  
for you?**

**15:00**

**Study Visits**

**19:30**

**Dinner**

**Thank you**

