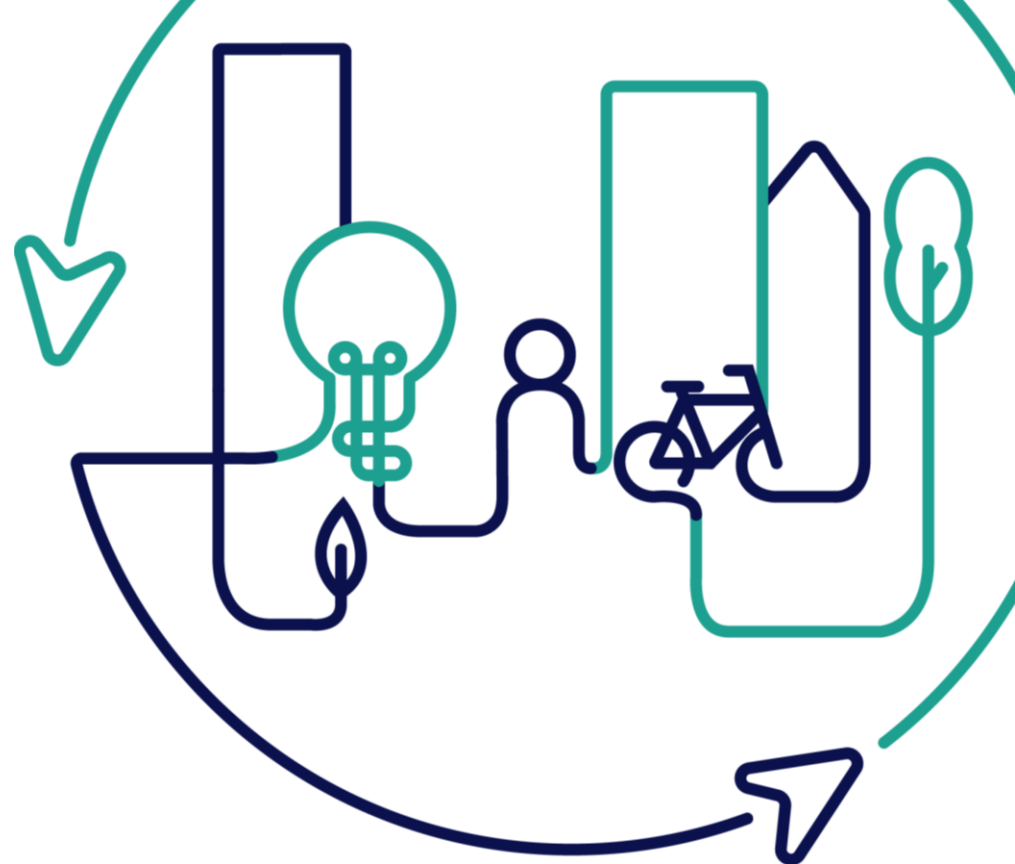


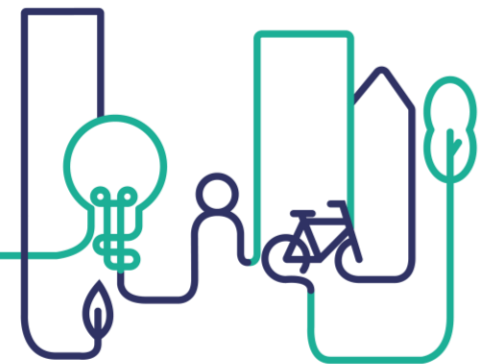
EUROPEAN U R B A N INITIATIVE



Co-funded by
the European Union

DESIGNING FOR IMPACT: ALIGNING PROJECTS WITH THE NEB VISION

Practical guidance on transforming urban spaces to reflect NEB's focus on sustainability, beauty, and inclusion.



Co-funded by
the European Union



Session Plan

14:15

Introduction

14:20

Presentation of Nano Nagle Place

14:40

Group Activity

15:25

Feedback

15:40

Wrap-up & Close



Session Aims

1

To showcase the 'what' of NEB. What are the values and principles of NEB and how can a project integrate and align these?

2


To share the experience of Nano Nagle Place in renovating a space, aligning with NEB values and principles.

3

To share and try out a NEB checklist tool aimed at supporting the alignment of projects with NEB values & principles.

4

To promote participant discussion and exchange on NEB challenges & opportunities.

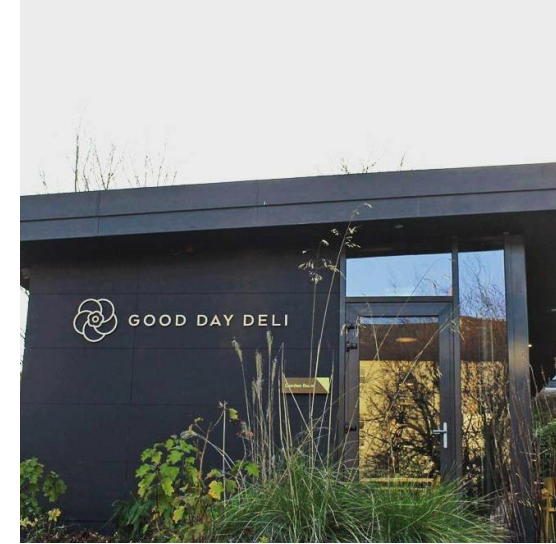
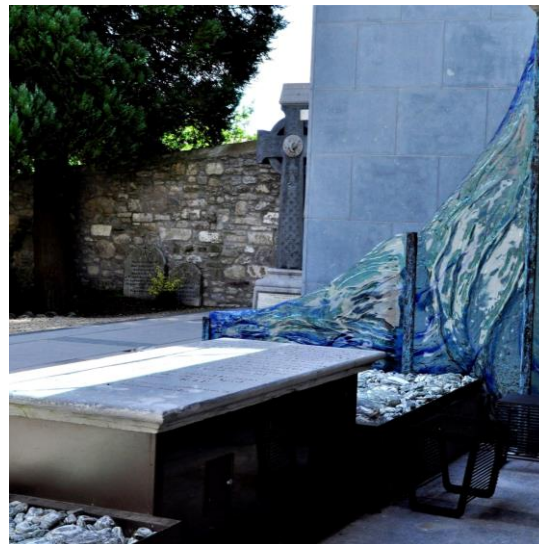


**Let's hear
from John &
Alan, Nano
Nagle Place!**



Nano Nagle Place

What is Nano Nagle Place?



Nano Nagle Place is an unique, serene oasis in the heart of Cork City.

The site is dedicated to Nano Nagle, an extraordinary woman, who defied social mores to educate the poor and aid the needy 250 years ago.

This work was continued by the congregation Nano founded, the Presentation Sisters, who brought her mission across Ireland and ultimately around the world. Nano's sisters still live at Nano Nagle Place, making us a vibrant site of living heritage.



Nano Nagle Place. Currently, a place of....

**Heritage
& Culture**

Learning

**Social Justice,
Action & Impact**



**Reflection
& Spirituality**

**Connection
& Belonging**



AWARDS 2022 Council of Europe Museum Prize

#1 Thing-To-Do-In-Cork on Trip Advisor

22 RIAI Urban Design & Master-planning Award

2020 Retail Excellence Ireland Visitor Store of the Year



NANO NAGLE PLACE

Nano Nagle Place has developed over many years since Nano used the first buildings on the site and founded the convent here.

1750 SITE OF EARLIEST SCHOOLS

1769 SITE OF NANO NAGLE'S COTTAGE

NANO'S 1771 BUILDING FOR URSULINES

1775 URSULINE BUILDING

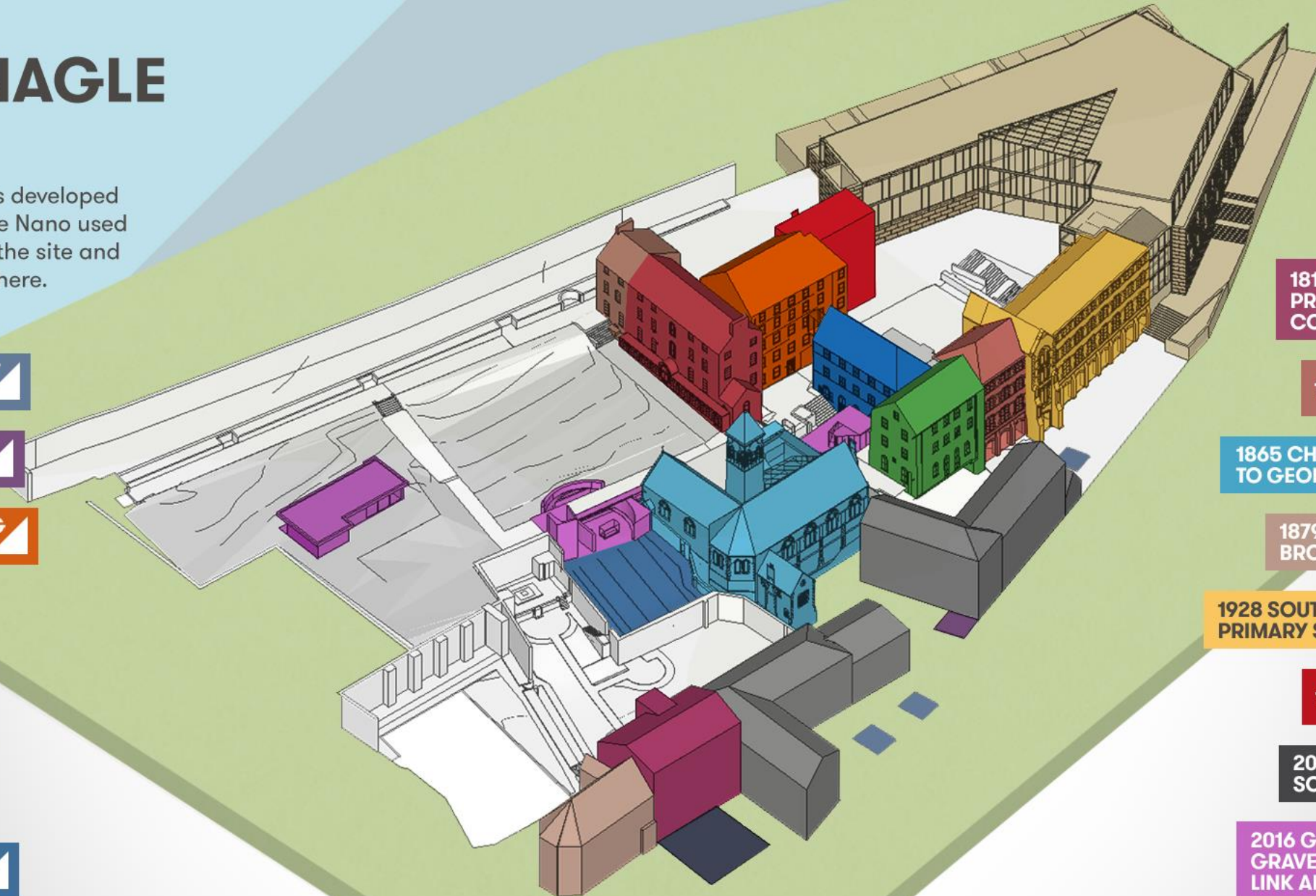
1777 SITE OF FIRST PRESENTATION CONVENT

1779 URSULINE BUILDING

GRAVEYARD DATING FROM 1780'S



TIMELINE



1790 URSULINE BUILDING

EARLY 1800'S EXTENSION

1810-1827 DOUGLAS ST PRESENTATION CONVENT

1870 EXTENSION

1865 CHAPEL ATTRIBUTED TO GEORGE GOLDIE

1879 PRESENTATION BROTHERS CHAPEL

1928 SOUTH PRESENTATION PRIMARY SCHOOL

1936 ADDITIONS

2002 NANO NAGLE SOCIAL HOUSING

2016 GARDEN ROOM, GRAVEYARD, HERITAGE LINK ADDITIONS

2017 WESTERN APEX DEVELOPMENT

Touch an option to find out more about the site

CORK MIGRANT CENTRE

Supporting and celebrating refugees and migrant communities, addressing social justice and equality issues through education

Advocates for

300+
international
protection
applicants

Empowering

500

Direct
Provision
residents

60

weekly
English class
students

“They have given us a place to express ourselves”



THE LANTERN PROJECT

A welcoming and inclusive community education hub transforming lives through learning and personal development

800
participants

33
annual
courses

900
support texts
per week sent
during the
pandemic

“I’m learning new information and meeting people from all walks of life”



THE MEN'S GROUP

A welcoming and well-being space for men living alone in need of support, creating opportunities for friendship and empowerment

Supporting

40

men who
live alone

Weekly

sessions with pool,
tea & chats

“A place that’s open for you. It gives you stability, safety and companionship”



SPIRITUALITY

250
years as a
convent

3
resident
sisters

1500
Presentation
Sisters around
the world



Learning and Engagement

Learning and Engagement Officer: Jessica Cull

We deliver Nano's vision of empowerment through education.

All visitors are encouraged to engage with Nano's story, Nano's 18th Century Cork and the work of the Presentation Sisters

School Tours at Nano Nagle Place:

1,500 students last year....

School Tour Activities:

Hope into History,
Museum in a Box,
Virtual Tours

Outreach,
E-learning,
Lifelong Learning Festival,
Family Activities



Nano Nagle Place



"I HAVE KNOWN BY WORDS
THAT SHE WOULD BE TO ME
AS I ONLY TAKE DELIGHT
AND PLEASURE IN THEM"

PROVERB THE
SCHOOL DAY

"I BEG,
HUMB.

HARDY
TERRY
SCHOOL









Welcome

Nano Nagle Place is a restored walled convent with beautiful hidden gardens and graveyards, in the centre of bustling Cork city.


Our stunning museum, wrapped around the beautiful Goldie Chapel, tells the extraordinary story of 18th-century Cork and how Nano Nagle worked tirelessly to educate the poor of the city against the backdrop of the oppressive Penal Laws.

LEARNING
Neighbourhood

LEARN TOGETHER

CHRIS LITTON
Learning @ NANO



85,982 

visitors to Nano Nagle Place
An increase of **32%**

3.1k 

newsletter subscribers
An increase of **24%**

18.8k 



followers on Nano Nagle Place

53k 

visits to www.nanonagleplace.ie
An increase of **25%**

1,538 

students visited from
35 schools across Munster

Participated in
10 Festivals 
with over
70 Events 
Onsite



Vision

Nano Nagle Place will become renowned as a destination for visitors to Cork, seeking a place of inspiration, contemplation and reflection at the heart of our busy city.

Our commitment to social justice, and the enduring history and impactful legacies of Nano Nagle, will inform, inspire, and challenge, so that everyone who visits can be informed about the past, challenged by the present and leave transformed to make a difference in the future



...net does not
...re successful
...he planet
...ly needs
...emakers,
...storers,
...s and lovers

~ Dalai Lama



Nano Nagle Place

Masterplan for South Presentation Convent, Cork

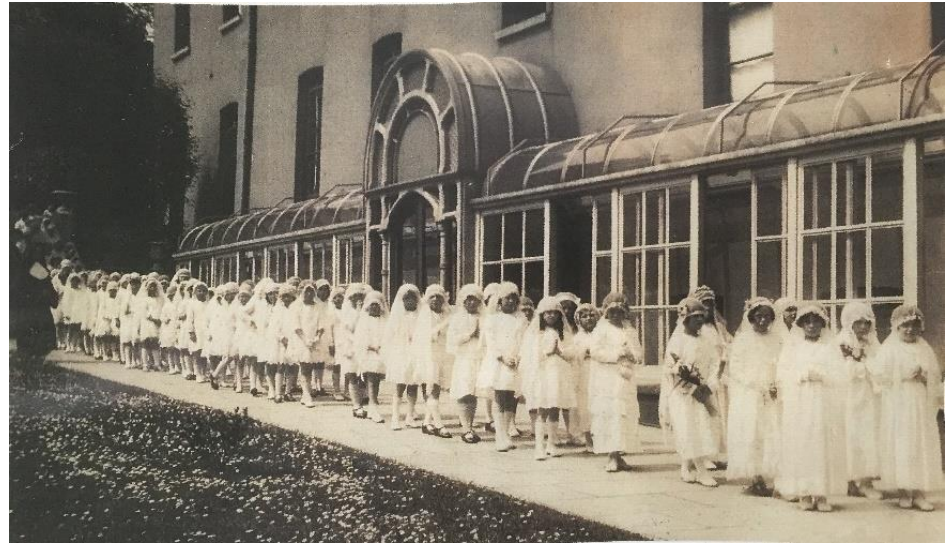
Alan Macilwraith MRIAI

JCA Architects

1997-2017

1997	South Presentation Secondary School Closed.	2006	South Presentation Primary School closed.
1997	Oidhreacht na Toirbhirte set-up for the redevelopment of South Presentation under the auspices of 3 Irish Provincial Leaders and the Congregational Leader.	2006	Archival Repository Study completed by Marianne Cosgrave (August 2006).
1997	Heritage Centre Consultations with Robin Wade Partners in London re Heritage Project. Plans developed focused around 1865 Chapel (building no. 19). Some drawings produced by Frank Murphy Architects.	2007	Congregational Archive Repository Feasibility Study (March 2007) - Carr, Cotter, Naessens
1999	South Presentation Community moved from Evergreen Street Convent to the refurbished old South Mon. on Douglas Street.	2008	Feasibility Study re use of Historic Core (May 2008) - Carr, Cotter, Naessens
1999	Outline Heritage Centre Plan prepared by Frank Murphy Architects. Preliminary proposal and proposed route plan incorporating use of 1865 Chapel, ground floor of building no. 10 and part ground floor of building no. 3.	2009	In April 2009 Chris Southgate produced an "Opening -up report on the Chapel to enable tendering of works for the conservation of the external envelope and roof of the Chapel.
2001	Reference to Presentation Order consultative process in Rochestown Park Hotel, Cork.	2009	Preliminary Structural Appraisal (December 2009)- Arup were commissioned to do a preliminary structural appraisal on buildings nos. 3, 10, 12, 7, 8, 4, 5, 9 and 16 see Appendix C
2001	Initial Heritage Assessment Report prepared by Jack Coughlan Associates. This provides a brief summary of the evolution of the site. Recommendation that Sisters commission an independent 'Conservation Plan'.	2009	Conservation of external envelope and roof of Chapel
2002	Nano Nagle Housing Association - 21 affordable apartments opened by President McAleese. Building located in old secondary school formerly the alms house/visitors house.	2010	Arup prepare a scoping document for further investigative work covering aspects of their recommendations. This suggested consultation with (i) a conservation architect (ii) a quantity surveyor (iii) a topographic surveyor (iv) timber decay specialist (v) drainage/CCTV surveyor (vi) building contractor.
2008	South West Leadership Team takes on responsibility for future development of South Presentation "Involve two other Irish Provinces").	2010	Cork City Council produced the South Parish Area Action Plan
2003	Carr, Cotter, Naessens (CCN) & Gary Miley engaged to develop an Integrated Development Plan. The Plan, funded by the Presentation Sisters was prepared in collaboration with Cork City Council.	2011	South Presentation Centre Company Limited by Guarantee set up on October 2011.
2004	St. Killian's school closed	2012	South Presentation Centre Company Limited appoint Chief Executive Officer
2004	A management/advisory group was set up to draw in further expertise so that the Integrated Development Plan elements might be progressed. (March 2004)	2013	JCA Architects led Design Team Appointed.
2004	Visitor Centre Feasibility Study - Collections, Displays & Funding - Aidan Walshe Report (Nov. 2004)	2014	Planning Permission Submitted following Stakeholder and Public Consultation.
2005	Visitor Centre Feasibility Study (January 2005) Architectural Report - Carr, Cotter, Naessens	2015	Nano Nagle Place Construction Commenced
2005	Title Deeds - CCN Development Plan Brief identified that nothing of consequence by way of development could take place until title deeds were sorted. This process commenced in 2005 and with the co-operation of Cork City Council was completed in November 2009.	2017	School of Architecture Construction Commenced
		2017	Nano Nagle Place Construction Complete
		2017	Nano Nagle Place Opens to Public







JCA Architects

Horganlynch 


**SHERWOOD
& ASSOCIATES**

 **Hegarty**
Building Contractors

 **Cahalane Lynch**
ASSOCIATES
CHARTERED QUANTITY SURVEYORS

[
CENTRE
SCREEN
]

Platinum Expo_


MBA


TAKING TECHNOLOGY FURTHER

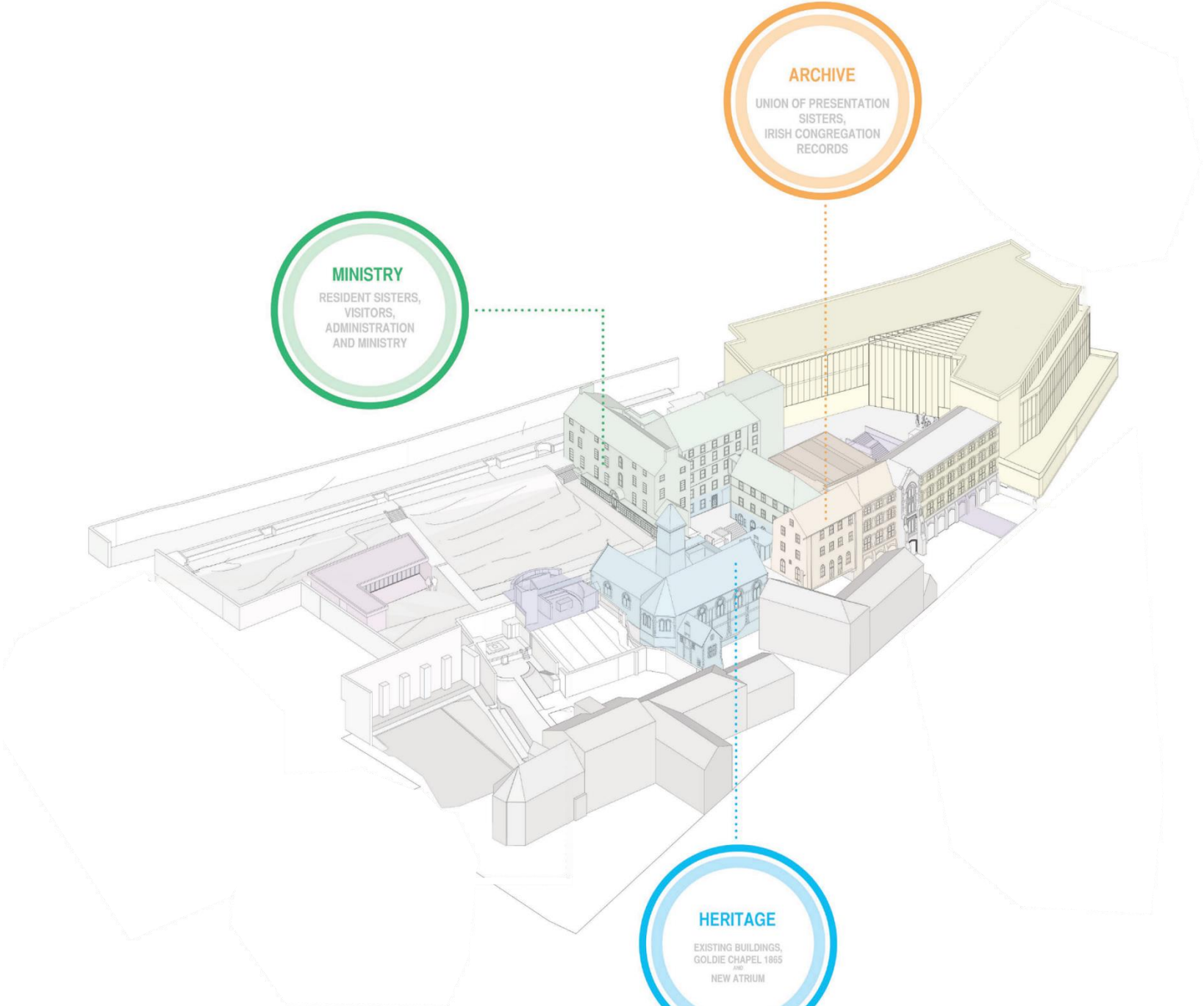
Bernard Seymour Landscape Architects



Gillian O'Brien

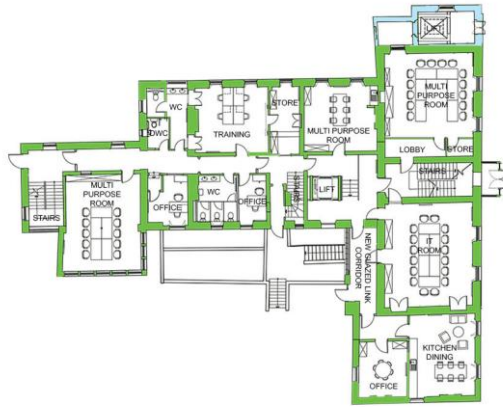
ARCHAEOLOGY | Maurice Hurley
Archaeologist

Mary Doran, Planning Consultant

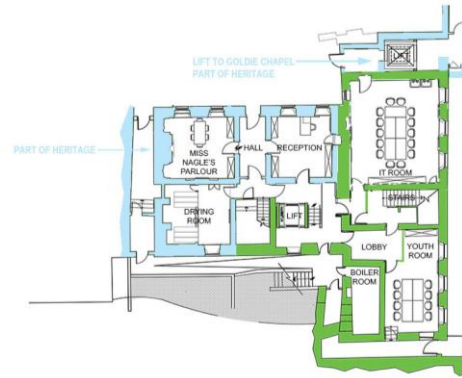




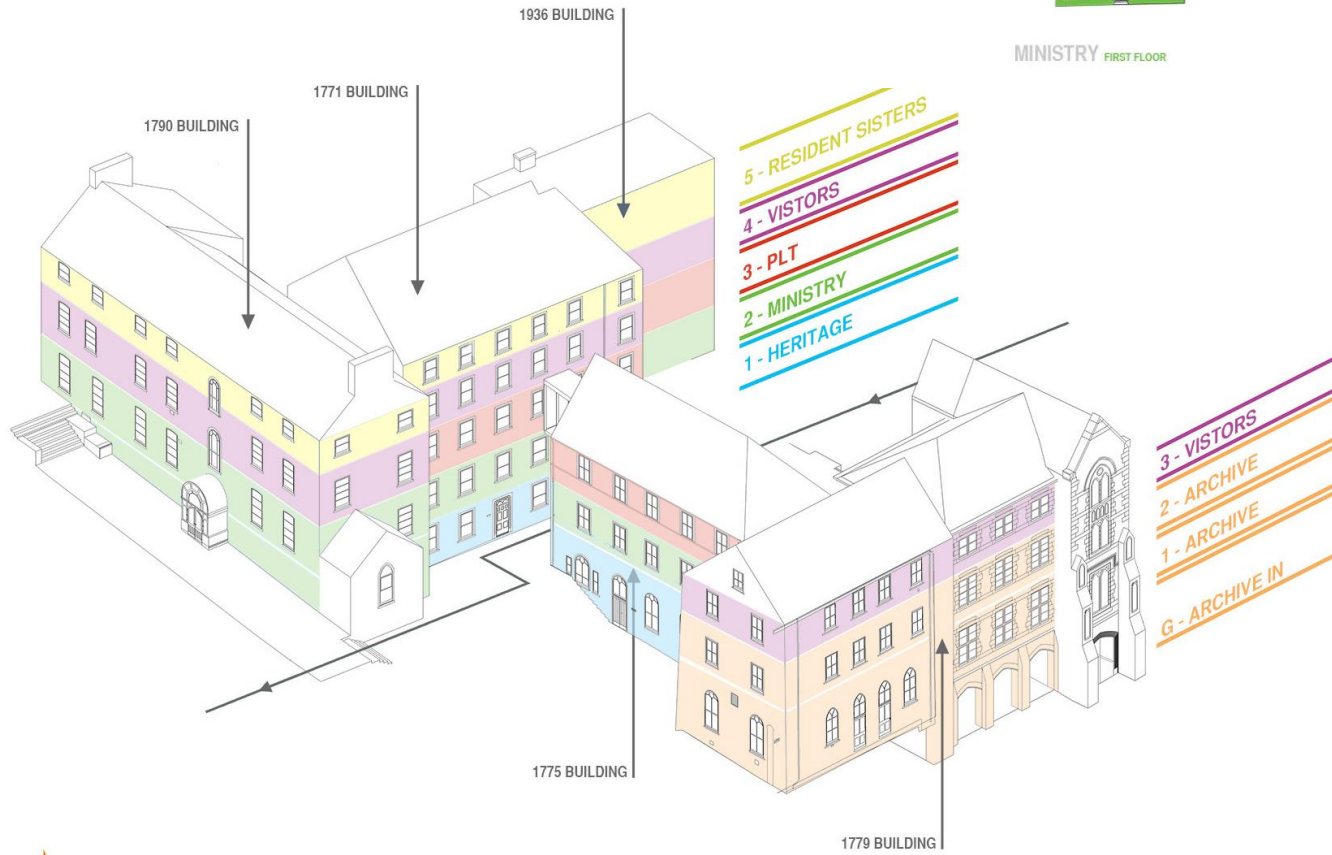
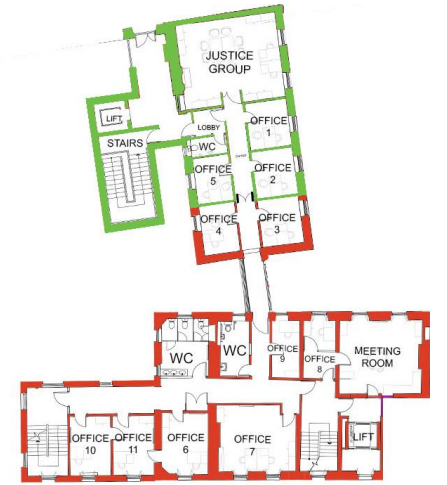




MINISTRY FIRST FLOOR



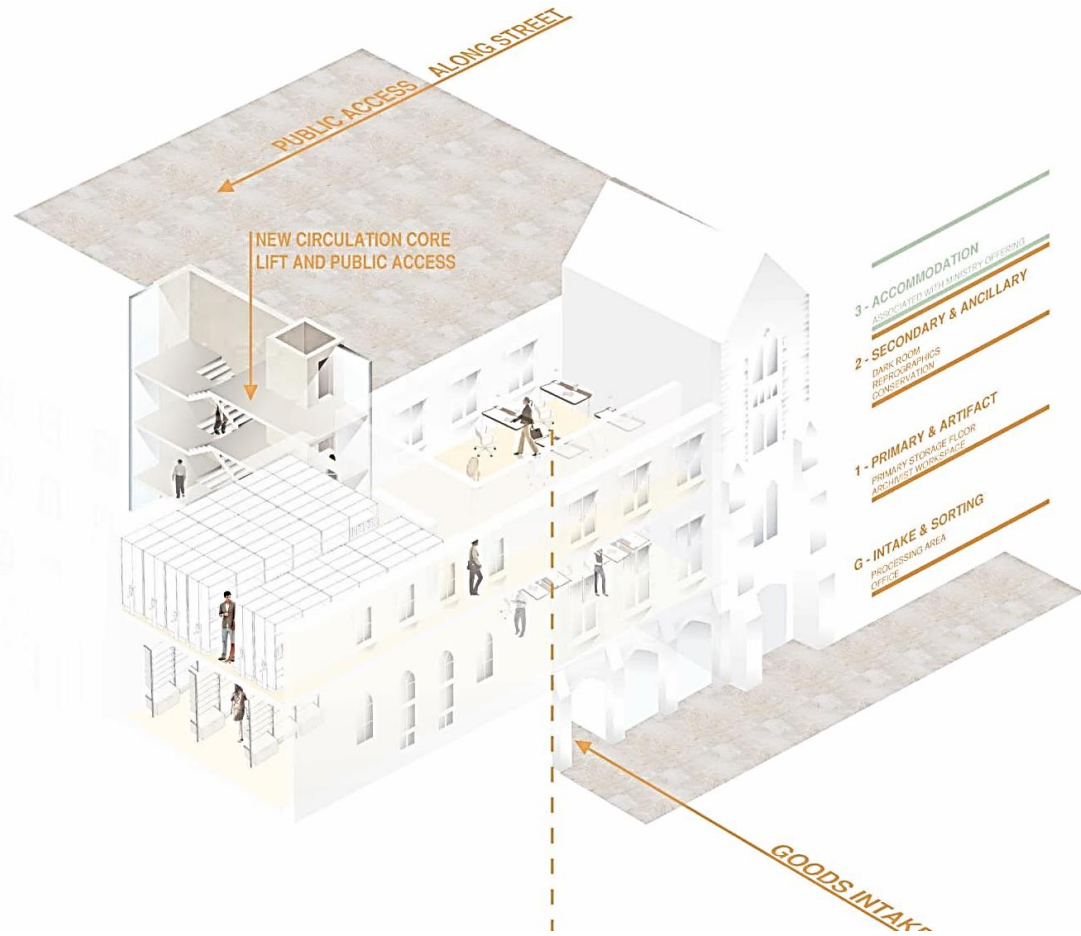
MINISTRY GROUND FLOOR

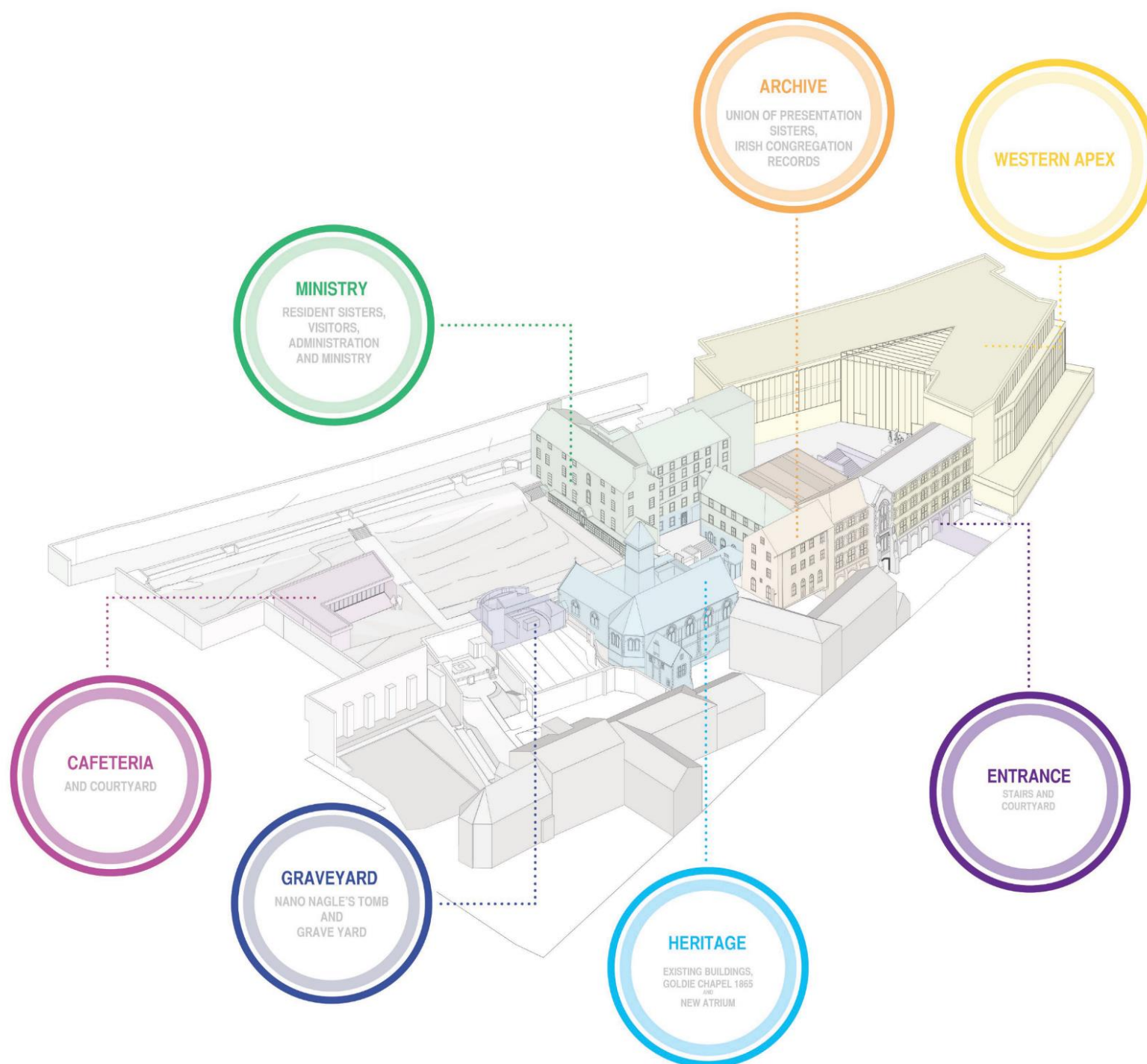


- 5 - RESIDENT SISTERS
- 4 - VISITORS
- 3 - PLT
- 2 - MINISTRY
- 1 - HERITAGE

- 3 - VISITORS
- 2 - ARCHIVE
- 1 - ARCHIVE
- G - ARCHIVE IN







MINISTRY
RESIDENT SISTERS,
VISITORS,
ADMINISTRATION
AND MINISTRY

ARCHIVE
UNION OF PRESENTATION
SISTERS,
IRISH CONGREGATION
RECORDS

WESTERN APEX

**CAFETERIA
AND COURTYARD**

GRAVEYARD
NANO NAGLE'S TOMB
AND
GRAVE YARD

HERITAGE
EXISTING BUILDINGS,
GOLDIE CHAPEL 1865
AND
NEW ATRIUM

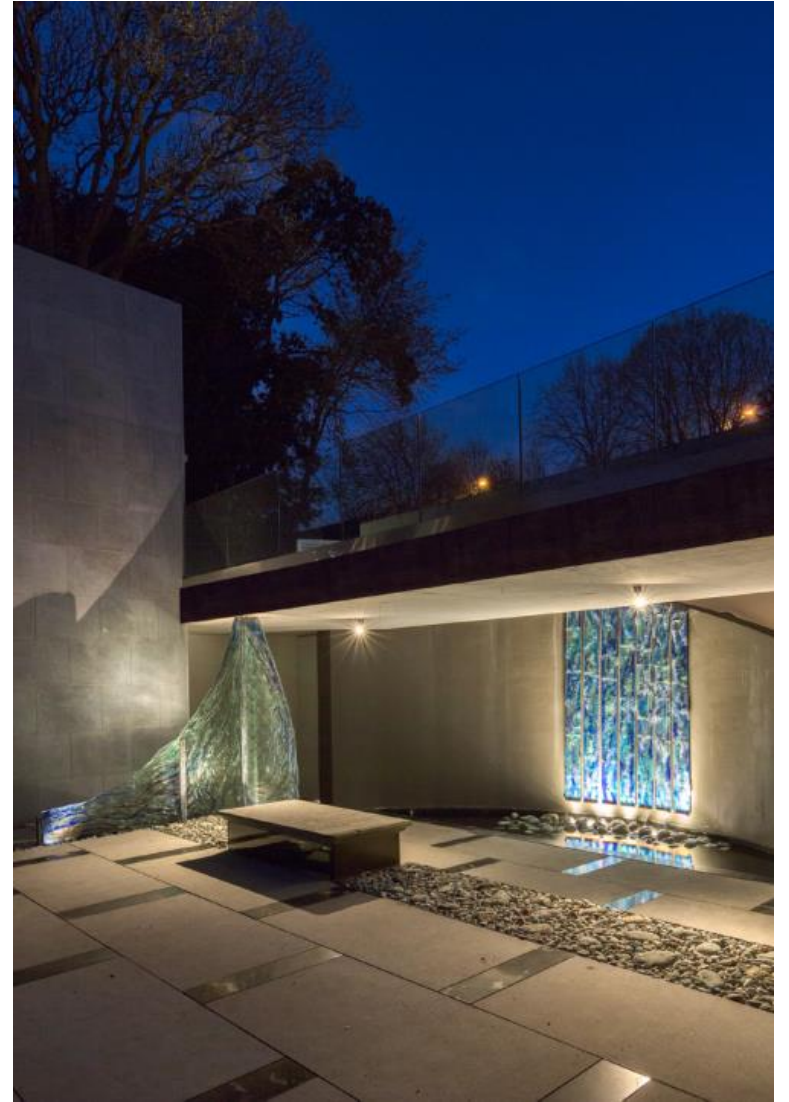
ENTRANCE
STAIRS AND
COURTYARD



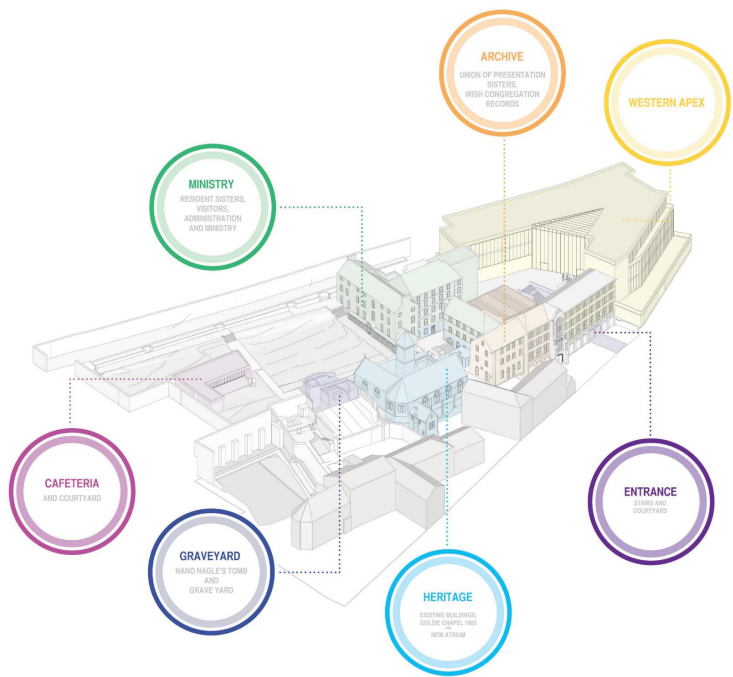






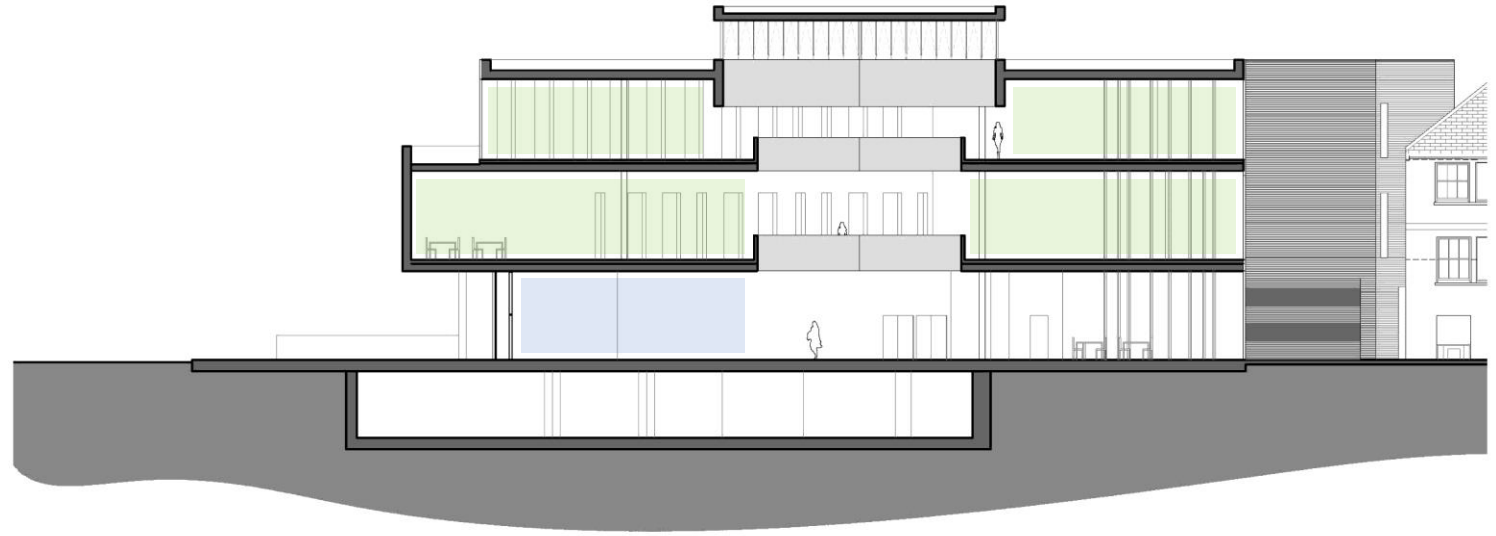








First Floor Plan
School of Architecture at Nano Nagle Place, Douglas street, Cork







**Questions
&
Comments**



**Group
Activity**

NEB CHECKLIST

HOW DOES IT WORK

- 1 value per table, if time allows reflect on the principles
- Discuss, exchange and answer the questions posed in the checklist, in so far as time allows (45 minutes)
- Assign 1 person to fill in the answers
- Assign 1 rapporteur to provide rapid feedback at the end (3 -4 minutes)
- Flipchart and guiding questions to guide the feedback



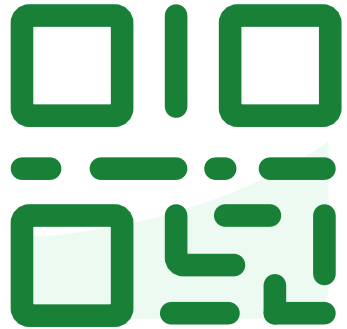
Feedback

RAPPORTEUR GUIDING QUESTIONS

- Which value did you assess?
- Which were the main, overarching dimensions analysed in this specific value?
- How did the project respond to them?
- Which are the most striking features of the project in this specific value?

slido

Please download and install the
Slido app on all computers you use



**Join at slido.com
#2340790**

① Start presenting to display the joining instructions on this slide.

slido

Please download and install the Slido app on all computers you use



Were the questions clear and understandable?

① Start presenting to display the poll results on this slide.

slido

Please download and install the Slido app on all computers you use



Were there any questions that you found particularly difficult to answer?

① Start presenting to display the poll results on this slide.

slido

Please download and install the Slido app on all computers you use



Do you feel that the questions seen today were able to break down the meaning of the NEB values & principles in practical terms?

① Start presenting to display the poll results on this slide.

slido

Please download and install the Slido app on all computers you use



Did using the checklist lead you to new insights or considerations about NEB that you hadn't thought about before?

① Start presenting to display the poll results on this slide.

slido

Please download and install the Slido app on all computers you use



How useful do you think the checklist will be for your daily practice or project evaluations?

① Start presenting to display the poll results on this slide.

slido

Please download and install the Slido app on all computers you use



**Do you find the checklist
adaptable to the specific context
of projects in your town or city?**

① Start presenting to display the poll results on this slide.

slido

Please download and install the Slido app on all computers you use



What improvements or additional features would you suggest?

① Start presenting to display the poll results on this slide.



**What's next
for you?**

15:50

Coffee Break

16:15

Site Visits

18:00

Free Time

19:30

Dinner

Site visits

Group 1

Leave Hotel at:
16.15
(follow Eileen)

Group 2

Leave Hotel at:
16.25
(follow Eleonora)

Group 3

Leave Hotel at:
16.35
(follow Eleni)

Thank you

