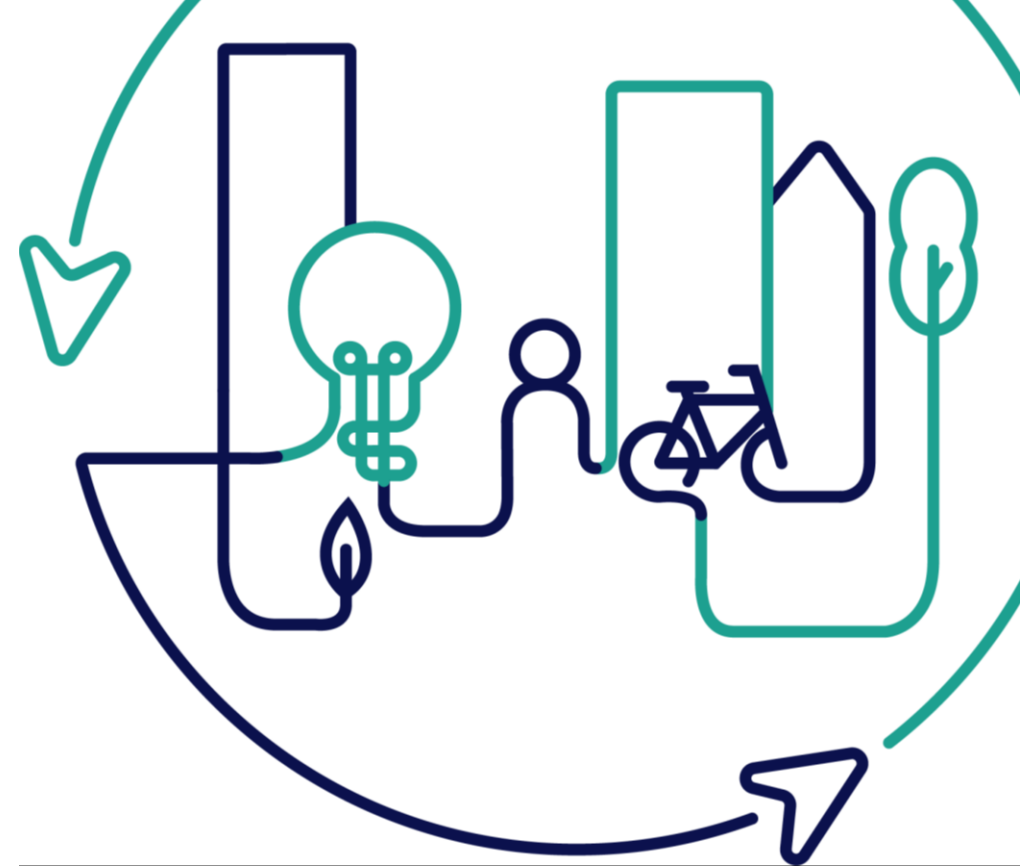


EUROPEAN U R B A N INITIATIVE



Co-funded by
the European Union



**WELCOME
TO DAY 2!**

**Strengthening ITI cooperation in
uncertain times**
*Enhancing urban resilience & crisis
management*

Współpraca w ZIT-ach w czasach niepewności
**Wzmacnianie odporności miast i zarządzania
kryzysowego**

2nd-3rd April 2025, Poznań, Poland



How are you?



Resilience &
Crisis Management



Integrated Territorial
Investment (ITI)

DAY 1

WHY? / IF?



DAY 2

HOW?



5 Thematic Focuses

Of Resilience and Crisis Management

1

TEMAT 1: Zarządzanie kryzysowe i rezyliencja w MOF

2

TEMAT 2: Cyberbezpieczeństwo

3

TEMAT 3: Kryzys geopolityczny i migracje

4

TEMAT 4: Bezpieczeństwo energetyczne

5


TEMAT 5: Adaptacja do zmian klimatu



TOPIC 4: Energy Security

TEMAT 4: Bezpieczeństwo energetyczne

Andrea Hagovská
City Banská Bystrica,
consultant KRIC



Understanding Resilience and Crisis Management in City Banská Bystrica

 **BANSKÁ
BYSTRICA**  **TRNAVA**

 **Mesto
Nitra**

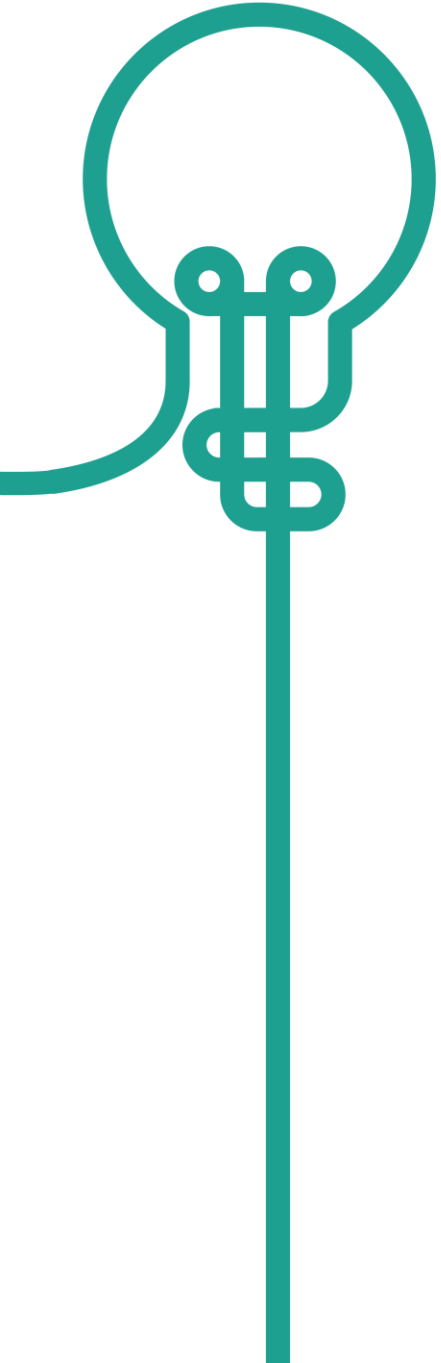
 **Mesto Zvolen**

**Presentation based on close
cooperation and partnership with
Slovak a Czech cities**

City Banská Bystrica

- Banská Bystrica is a city in **Central Slovakia** located on the Hron River in a long and wide valley encircled by the mountain chains of the Low Tatras, the Veľká Fatra, and the Kremnica Mountains. Banská Bystrica **is the sixth most populous municipality in Slovakia** and is an economic, administrative and cultural centre of Central Slovakia, and the seat of the Banská Bystrica Self-Governing Region.
- **Twin town in Poland – Radom**, partnership since 2001.
- Te first written [record dates](#) to the 13th century. In 1255 king Belo IV promoted the status of the original Slovak settlement of Bystrica to that of a free royal city. After 1380 [Banská Bystrica](#) became a leader in a union of mining towns.
- According to data from the [registry](#), **73 041 inhabitants** had their permanent residency in the city at the end of 2024.
- The city is a place of 3 universities, 18 secondary schools, 23 primary schools ...





1

**City resilience and strategy planning,
context**

2

**SIX steps so sucesfull integration for better
resillience**

3

Key topics energy and more

4

From Small projects to Strategic Integrated Territorial
Investment

5

Good Pracice Examples

18 + 8 FUA

18 Urban areas

ERDF Allocation

BB ECR interventions
more than 23 050 000
EURO

BB – 60 mil. EURO
TT - 38 mil. EURO



PROGRAM
SLOVENSKO

**ONE
Operational Program**

Program Slovakia

5 political objectives

39+ specific objectives

3/PO2*

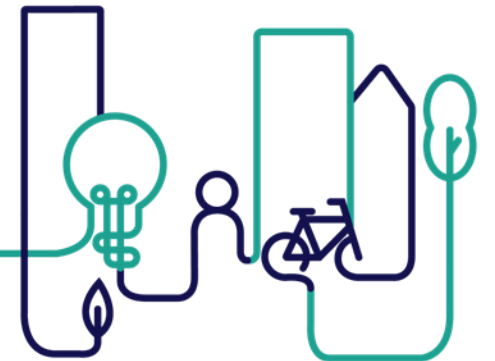


FUA BB Integrated Territorial Strategy and **Strategic Development Programme Banská Bystrica 2030** -> strategic (flagship) integrated project „Innovation hub BB“

Integrated Territorial Investment (ITI) project is proposed across 4 objectives and 5+ measures of the **Programme Slovakia** and assumes the overlap the present investment limits for SUDs in Slovakia by MIRD SK. Could be „**operation of strategic importance**“.

Project is based on results of **3 Technical assistance projects** for FUA BB provided by **DG REGIO & JRC, OECD** and **World Bank Group** and valorize **Catching-up Regions Initiative** investments in Banská Bystrica Self-government Region (BBSK) + **1 capacity building program**

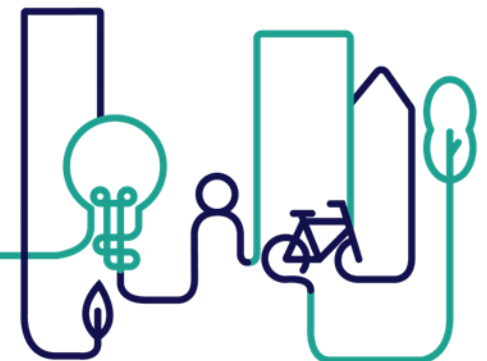
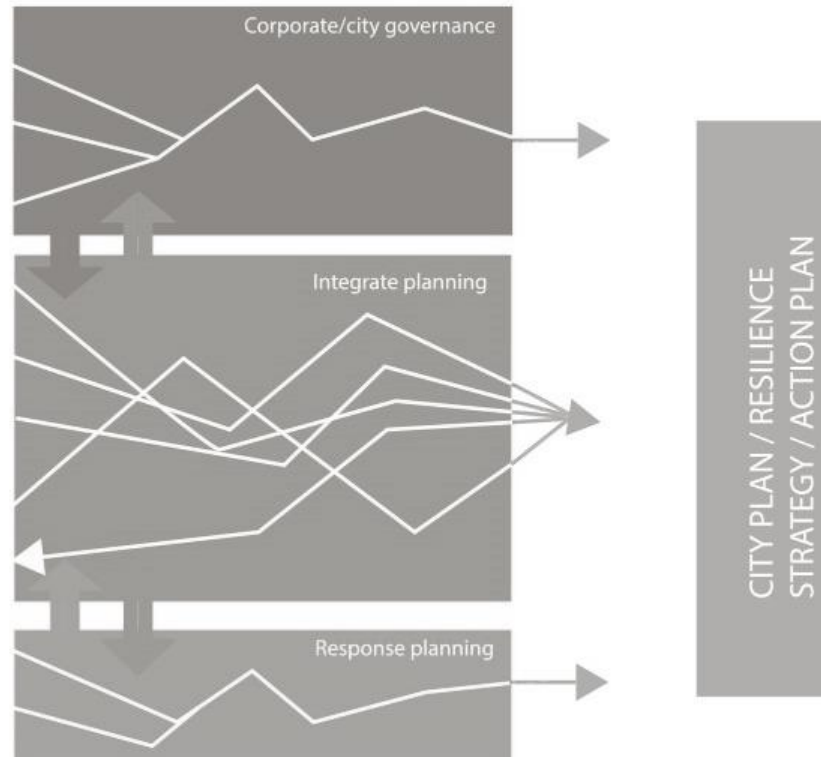
SUD level application of the **EU Cohesion Policy principles**, Territorial Agenda 2030, Urban Agenda for the EU, SUD related handbooks and tools by JRC, New European Bauhaus investment guidelines, 9th Cohesion Report and **last Letta's and Draghi's reports...**



MCR 2030

- 1  Organise for disaster resilience
- 2  Identify, understand and use current and future risk scenarios
- 3  Strengthen financial capacity for resilience
- 4  Pursue resilient urban development and design
- 5  Safeguard natural buffer to enhance the protective functions offered by natural ecosystems
- 6  Strengthen institutional capacity for resilience
- 7  Understand and strengthen societal capacity for resilience
- 8  Increase infrastructure resilience
- 9  Ensure effective disaster response
- 10  Expedite recovery and build better

1

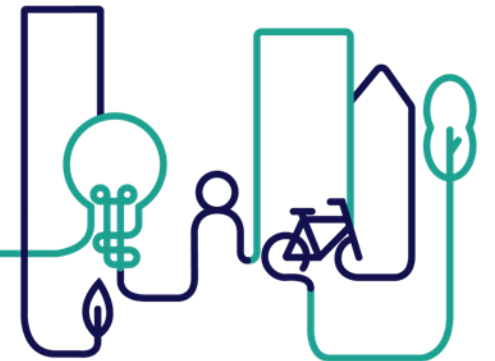


Strategy Framework



Benefits of CRF'24:

- **A simplified framework**, with goals based on best practice and industry standards
- **Provides a common language** around resilience, promoting a shared understanding and facilitating better engagement with diverse stakeholders
- **Encourages systemic thinking** by identifying interdependencies between objectives.
- **Identifies which goals to prioritize**, based on city-wide and local challenges
- **Provides a straightforward methodology** to assess a masterplan's potential performance
- **Helps cities evaluate projects** to ensure that they demonstrate cross-cutting resilience outcomes and better meet the funding criteria of IFIs or climate funds



Strategy and Objectives

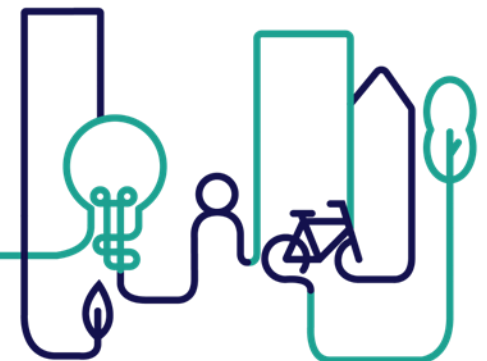


Empower and build up capacity in participating local and regional governments in different governance levels

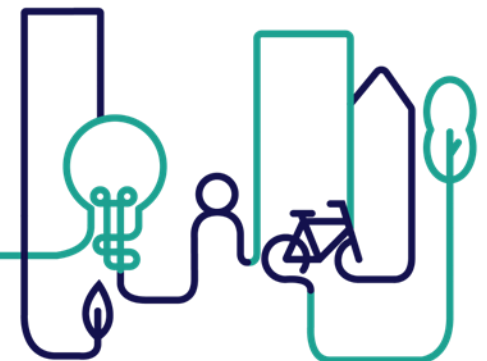
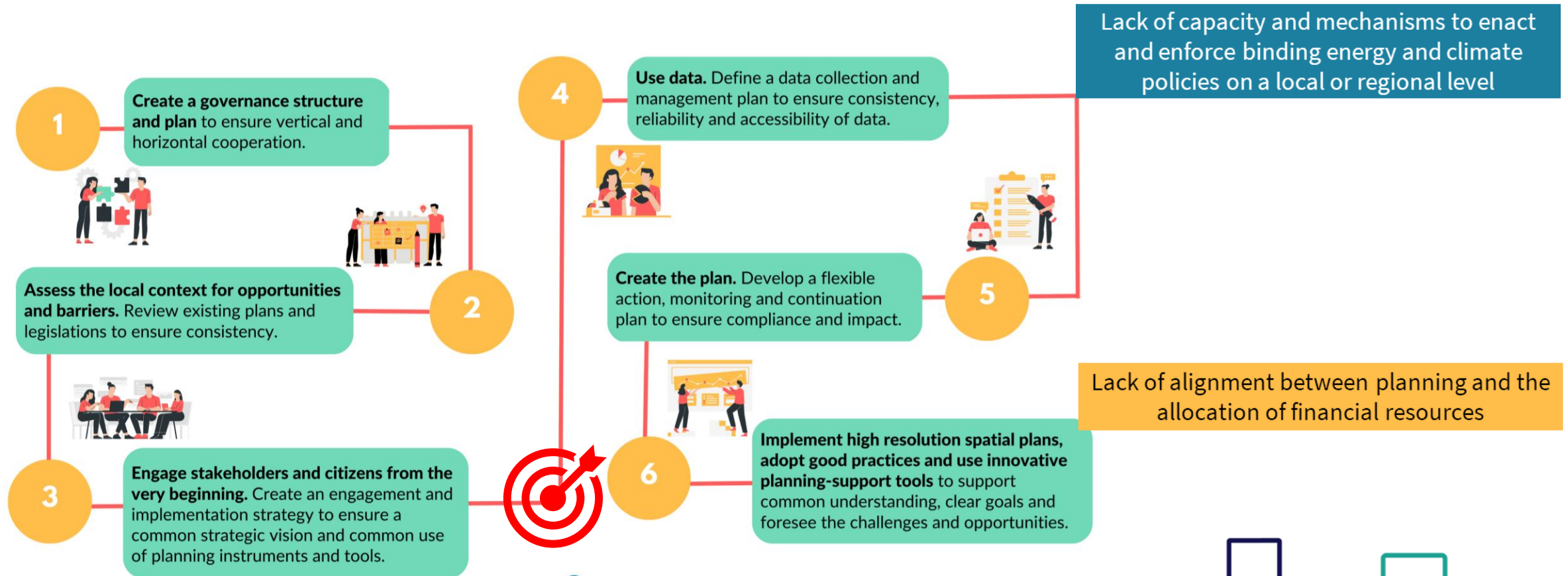
Integrate energy, climate and spatial planning to resilience (mobility, infrastructure, etc.)

Matching measures with **local and regional budget lines**

Support structure for integrated planning enabling local and regional authorities to implement IP/ITI



Six steps to successful integration



Feedback and first achievements

Feedback

Lack of tools and mechanisms to implement and enforce plans

- Silo thinking
- Difficulties to exchange with other governance levels
- Cities struggling to exchange with national level

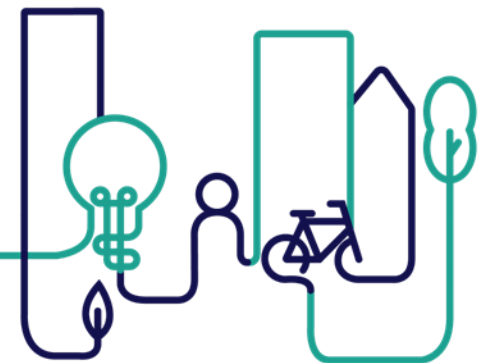
Consideration of other plans in drafting process

Importance of data management

First achievements

- Integrated investment package
- Data audit and assessment
- Action plan – first investments

<https://www.banskabystrica.sk/ideathonbb/> // <https://www.banskabystrica.sk/samosprava/otvorena-samosprava-ogp-local/participativny-rozpocet/>



VISION

GREEN TRANSFORMATION

improving sustainable green public spaces quality; sustainable transport measures, energy and climate change adaptation measures...

Resilient City Banská Bystrica – Resilient Communities

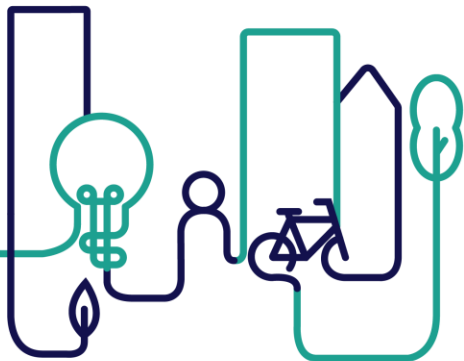
MISION



STRATEGY



Participation, open and multi-level governance



The involvement of **key stakeholders**, including local communities, is essential at every step. **Communities of practice** are gradually emerging.

The screenshot displays the OGP LOCAL website for Banská Bystrica. At the top, there are logos for 'Open Government Partnership' and 'OGP LOCAL Banská Bystrica'. A central banner for 'VEREJNÉ HLASOVANIE O IDEOVÝCH ZÁMEROCH PRE ROZVOJOVÉ PROJEKTY MESTA' (Public consultation on ideas for city development projects) is visible, along with an 'IDEATHON BB' event for '1.4.2023' from 9:00 to 16:00. Below the banner, a search bar and navigation menu are present. The main content area features a large image of the city with the headline 'Spoločne tvorme Banskú Bystricu' (Together we create Banská Bystrica) and a 'ZÚČASTNIŤ SA' (Participate) button. A section titled 'AKTÍVNE PROCESY' (Active Processes) lists four items: 'Program rozvoja mesta Banská Bystrica 2030', 'Participatívny rozpočet 2024/2025', 'Pripomienkový proces finálneho návrhu PRM 2030', and 'Pripomienkový proces finálneho návrhu IÚS FMO Banská Bystrica'.

> Severná

Resilient Urban Community, a comprehensive integrated community-led regeneration project

From - 1/09/2023

To - 1/09/2027

> Resilient schools

A comprehensive investment package in secure education infrastructure and services

From - 1/03/2020

To - 1/09/2027

> 3D Modeling

3D city map for SMART technology, simulation and strategic planning, preparation of IPP **Municipal**

Power Plant

From - 1/03/2020

To - 1/09/2027

[https://mestobbweb01storage.blob.core.windows.net/pr
oduction/2024/12/Integrovana-uzemna-strategia-FMO-
Banska-Bystrica_Verzia-2.0.pdf](https://mestobbweb01storage.blob.core.windows.net/pr
oduction/2024/12/Integrovana-uzemna-strategia-FMO-
Banska-Bystrica_Verzia-2.0.pdf)

ITI Banská Bystrica



Financované
Európskou úniou
NextGenerationEU

PLÁN [OBNOVY]



MINISTERSTVO
HOSPODÁRSTVA
SLOVENSKEJ REPUBLIKY



[https://urban.jrc.ec.europa.eu/urban/my-city?lng=en&ctx=urban&ts=URBAN&pil=level-
indicator&is=Default&stu=SK003L1&tl=5&tu=SK003L1&cl=default&clc=highlights-
1&fvs=false](https://urban.jrc.ec.europa.eu/urban/my-city?lng=en&ctx=urban&ts=URBAN&pil=level-
indicator&is=Default&stu=SK003L1&tl=5&tu=SK003L1&cl=default&clc=highlights-
1&fvs=false)

➤ Block of Flats Goliana

Comprehensive revitalization of the urban area as part
of a sustainable FUA Trnava

Phase 1: 01/05/2025 1/09/2023

Phase 2: 1/03/2024

Min. 20 mil. EURO, 115 000 m²

➤ Agátka

Inovative approach to public space

Integrated Pilot project – climate adaptaton, energy
efficiency, public services

<https://urbact.eu/good-practices/public-space-revival>

➤ Medziháj

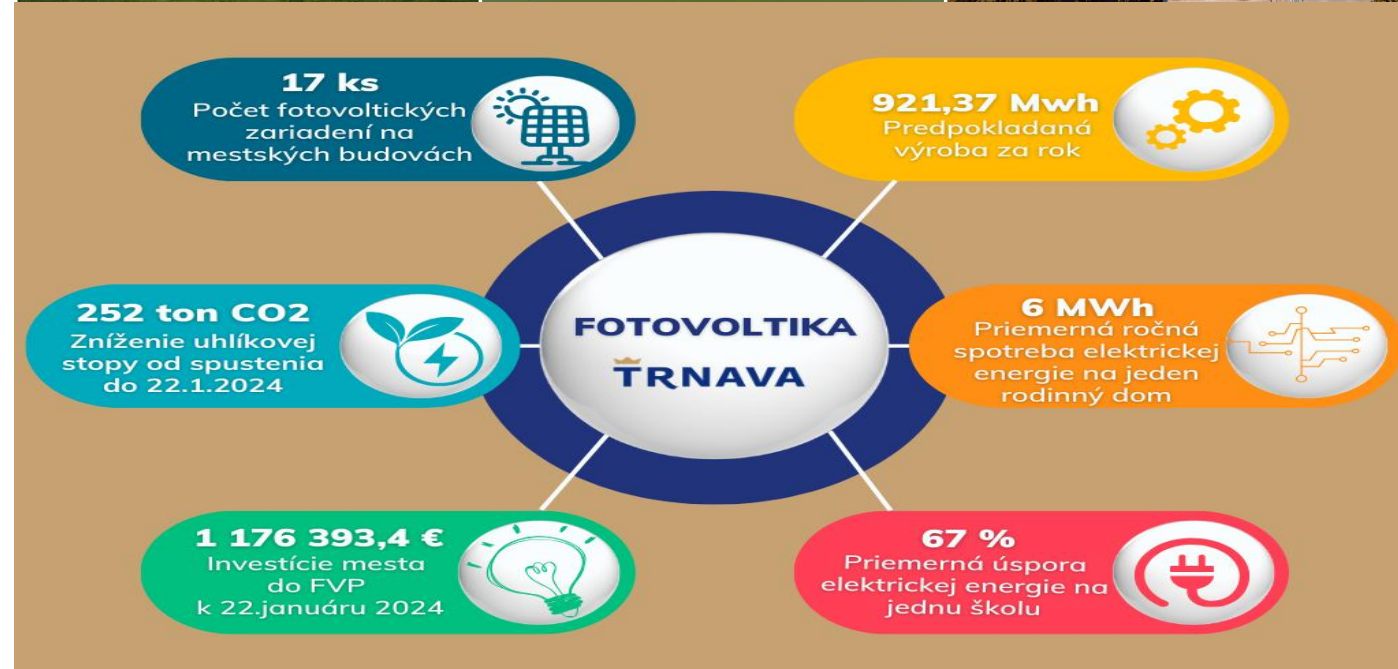
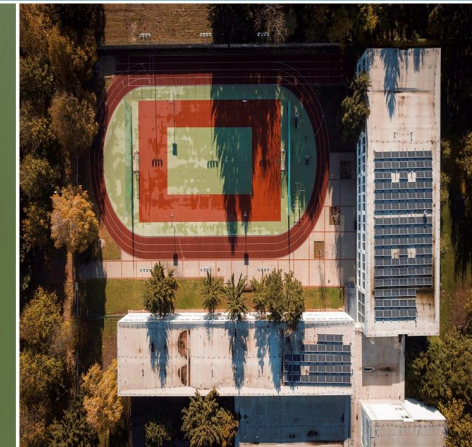
A new urban part of Trnava with direct connections
and facilities for the surrounding villages, bio-corridor

Phase 1: 01/01/2022 - 1/09/2026

Min. 10 mil. EURO, 110 ha

**By 22 January 2024, its carbon footprint by
252.01 tones of CO₂, a saving of 345 trees
planted.**

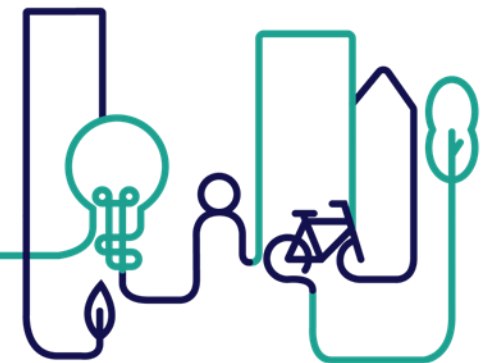
URBAN ITI Trnava



Social innovation and resilient city Banská Bystrica

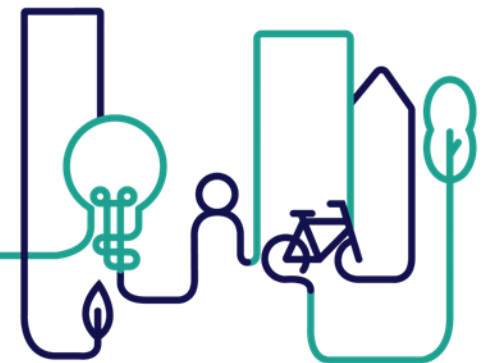
Collective impact – build a network of community members, organizations, and institutions who advance equity by learning together, aligning, and integrating their actions to achieve population and systems level, based on integrated a placed – based approach, ITI +, **U – CLLD pilots for urban active communities** and other new financial instruments

TOGETHER and RESPONSIBLY - PRM BANSKA BYSTRICA 2030
- FUA BANSKÁ BYSTRICA 2030



Thank you
Ďakujem

Dziękuję za uwagę



TOPIC 5: Climate Adaptation

TEMAT 5: Adaptacja do zmian klimatu



Alexandru Kelemen,
*Director Executive,
Jiu Valley, Romania*

JIU VALLEY

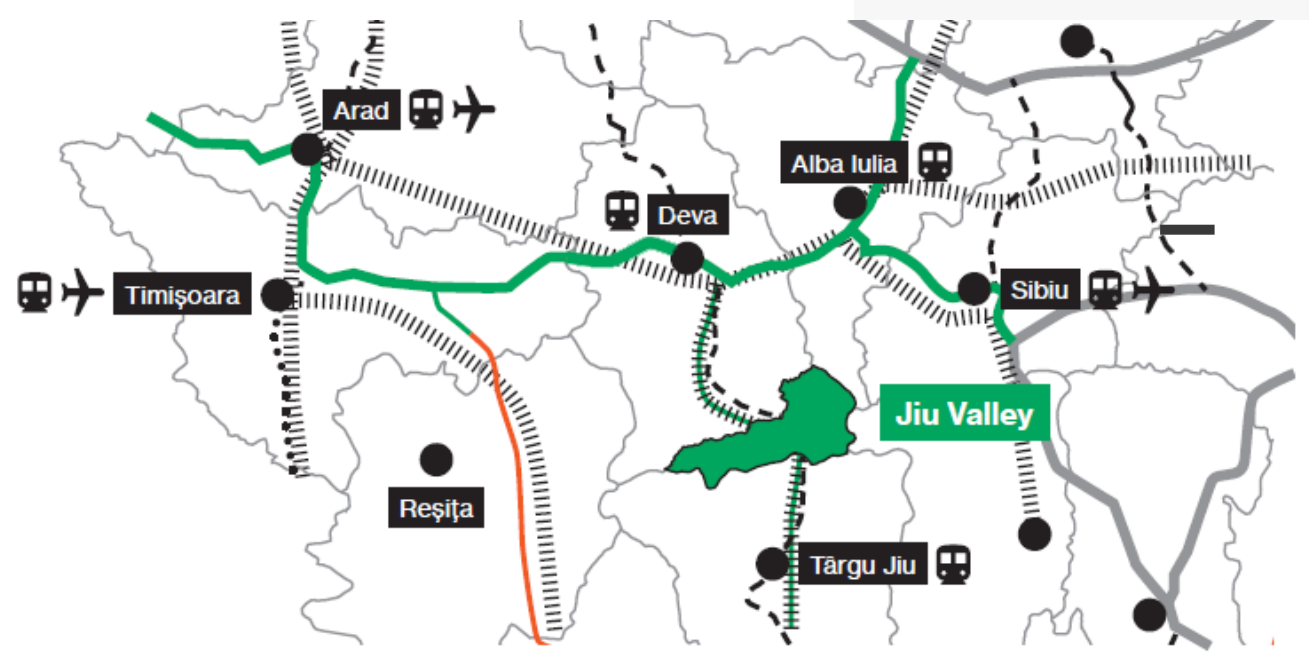
Let's reinvent together!



*Collaboration
Projects
Challenges
Opportunities
Scalability*

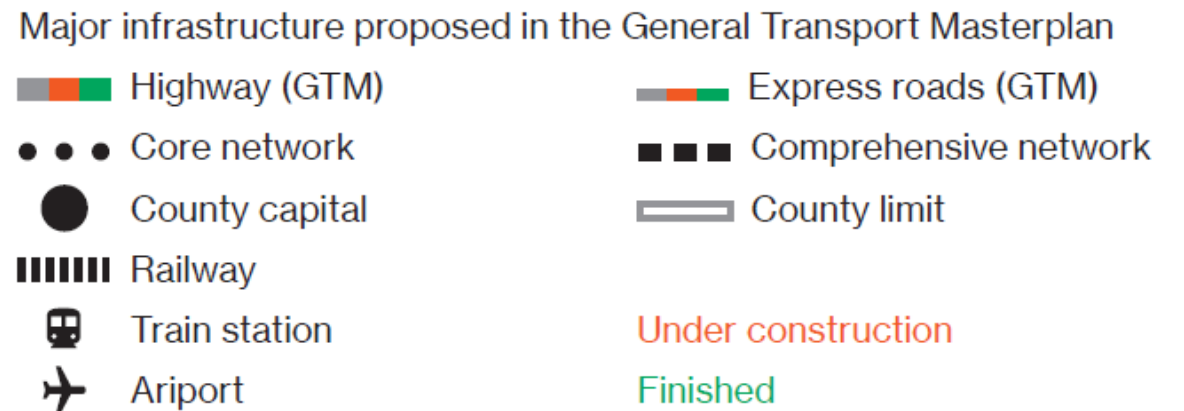
**A green, inclusive, innovative,
sustainable future**

Poznan, 03 April 2025
by the Jiu Valley community



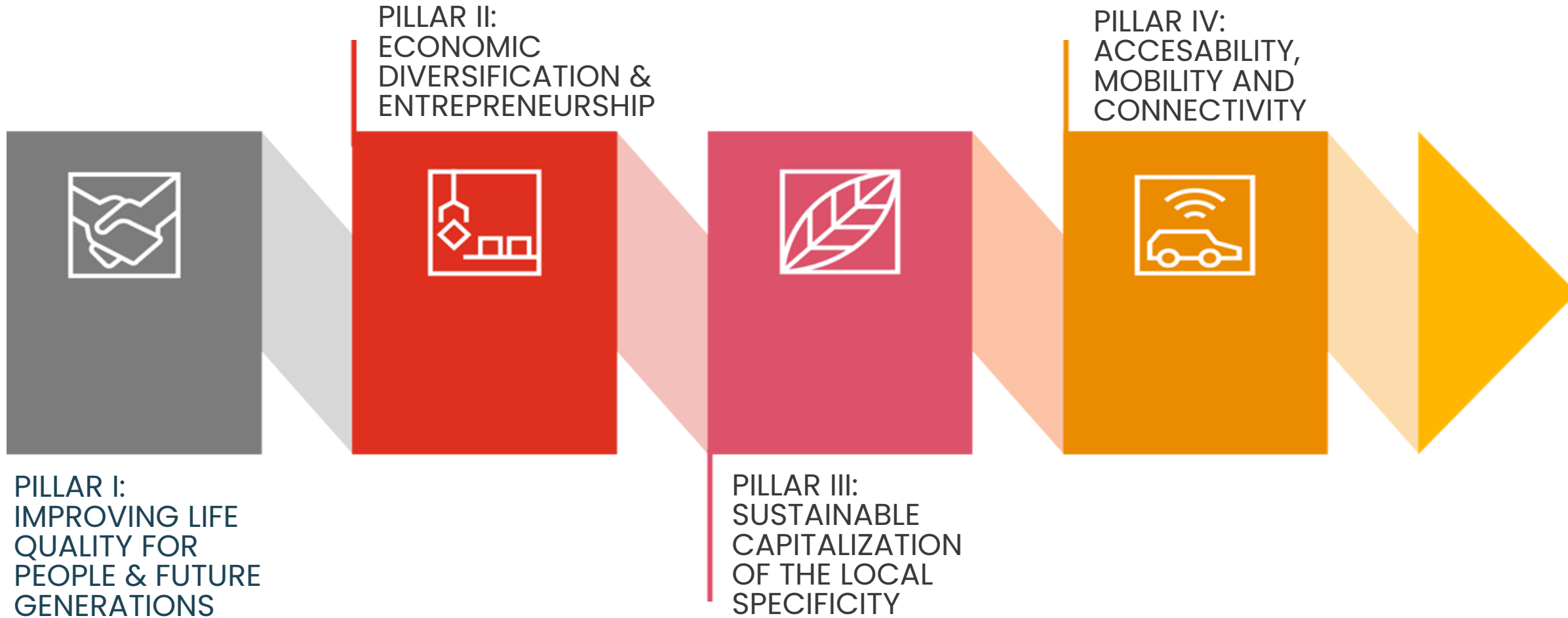
The largest underground mining microregion in Romania, at the core of the Jiu Conurbation (connecting Hunedoara to Gorj and Dolj counties).

The largest urban area in Romania totally surrounded by natural protected sites.



1 hour away from the A1 Highway, 2 hours away from the closest international airport, and 5 hours away from Bucharest, it recovers through **a just transition process monitored by an entity including the representatives of all relevant stakeholders in the microregion.**

THE STRATEGY FOR ECONOMIC, SOCIAL AND ENVIRONMENT DEVELOPMENT 2022-2030/ ITI JIU VALLEY



GOVERNANCE OF ITI

Asociația pentru Dezvoltare Teritorială Integrată
Valea Jiului / **Association for Integrated Territorial
Development of the Jiu Valley**

preceded by the Memorandum of the Romanian
Government and the Protocol for Just Transition
signed by the Mayors of the Jiu Valley in Brussels.

The Protocol of collaboration for the development of
the Jiu Valley, signed by the local actors (Mayors,
University, Mining company – CNH, INSEMEX, private
sector, syndicates, and NGOs).



Local administration

Hunedoara County Council
Municipalities of Aninoasa,
Lupeni, Petrita, Petroșani,
Uricani, Vulcan

Academia

University of Petroșani

Entrepreneurs

Association of the Jiu Valley
Initiative Committee

Civil society

Association Jiu Valley Development
Society Project, Autism Helping
Hands, Urban Lab Valea Jiului
(members of the Engaged Jiu
Valley NGOs Coalition)

- Green transport
- Green economy
- **Cities for people**
- #1 air quality
- Nature - urban environment balance

VISION: AN EXEMPLARY GREEN & INNOVATIVE FUTURE

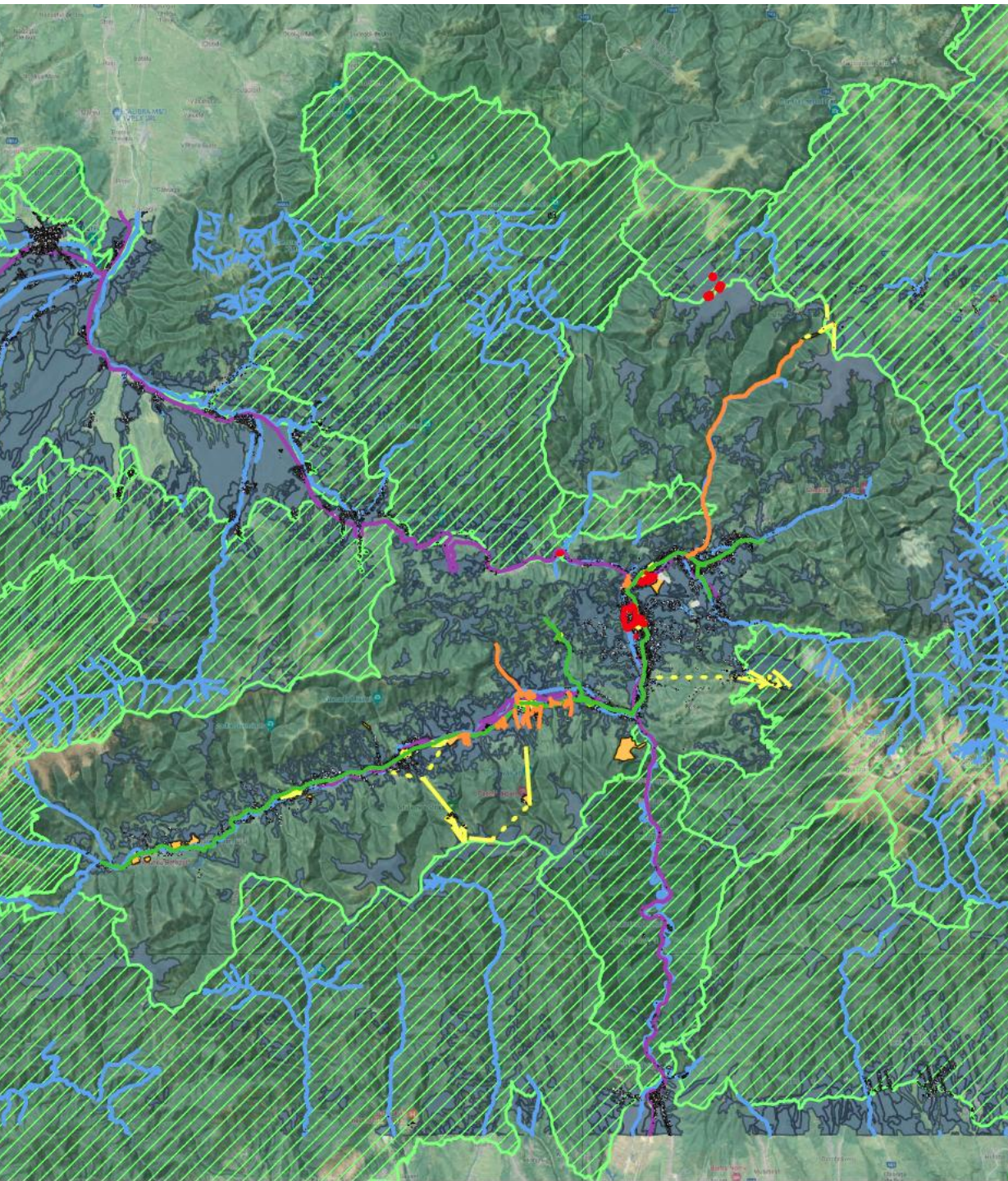
- Vibrant community
- Technological Hub
- Digitalization
- Innovation Research Center
- Sustainable tourism
- Cultural activities



CHALLENGES OF TRANSITION


- **Energetic transition** – how to switch from a energy producing region into a self sustainable energy consumer
- **Economic diversification** – monoindustrialism to SME diversification
- **Enviromental adaptation** – repurposing former mining sites





SPATIAL PLANNING

- Integrated spatial planning at the level of each municipality, using the existing means at hand (planning at the micro-regional or municipal level) or those developed through the latest legislative changes (urban planning at the level of metropolitan areas).
- Monitoring and control of growth & identification of problematic areas



GREEN PUBLIC INFRASTRUCTURE

- Jiu Valley Photovoltaic Park (Maleia Hill in Petrosani and Petrila, public buildings, providing energy for the whole public system in Jiu Valley).
- Electric-mobility, fast charging stations.
- Connected bicycle lanes for the entire Jiu Valley.

An aerial photograph of a city, likely Jiu Valley, taken during sunset. The sun is low on the horizon, casting a warm, golden glow over the city and the surrounding hills. The city is densely packed with buildings, and the foreground shows a large, multi-story building with a red roof. The sky is a mix of orange, yellow, and blue.

INTEGRATED DEVELOPMENT

- Jiu Valley Energy Community
- Jiu Valley Tourism Management Organisation
- Jiu Valley integrated system of social fare
- Jiu Valley public services: transportation, water/sewage,



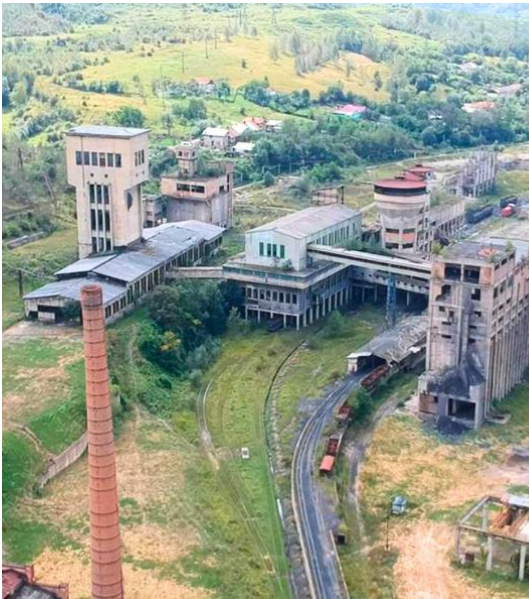
URBAN REGENERATION

- Regeneration of former industrial sites to give them back to the community and also ensure preservation of heritage.
- Investment in residential infrastructure, and energy efficiency

PILOT PROJECT PETRILA MINE

JIU VALLEY STRATEGY

Integrated project to repurpose the former Petrița Mining Site into a cultural, research, development and innovation center. Largest post-industrial bottom-up regeneration project in Romania.



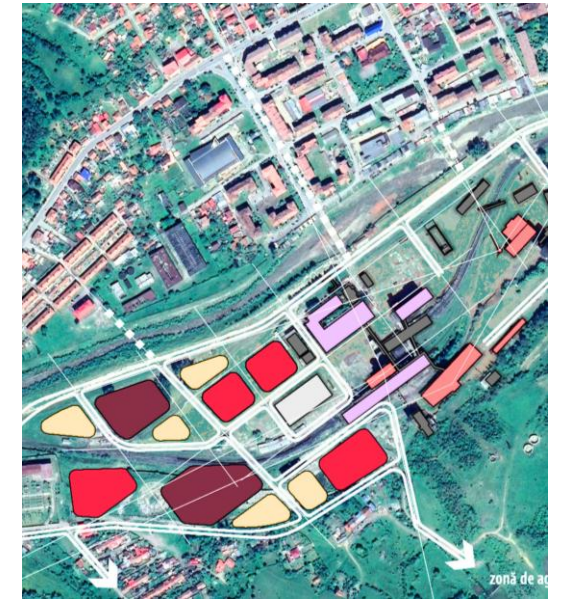
current status



cultural core



center for creativity
and innovation



industrial and
business center

PILOT PROJECT: ROBOTICS VALLEY DIGITAL SKILLS AND COMPETENCES



- Research and innovation center: the development of training centers in robotics and new technologies where the best students from the high schools in Jiu Valley will be selected, where by collaborating in robotics, mathematics, informatics (STEAM) teams they will participate in national and international competitions.
- Development of creativity and innovation centers in relation to the University and highschools.
- Repurposing of abandoned lands by building up outdoor amusement parks and sports tracks.



LET'S GROW TOGETHER!



www.valeajiuluiimplicata.com

www.valeajiului.eu

www.investinjiuvalley.com

alexandru.kelemen@valeajiului.eu





Workshop 2: How Well Do ITI Strategies Address Key Resilience Themes?

**Warsztat 2: W jaki sposób strategie
ZIT mogą pomóc w budowaniu
gotowości i stawianiu czoła nowym
wyzwaniom w MOF-ach?**



1

Zarządzanie kryzysowe i rezyliencja w MOF

Dawid Ozimek – *Zastępca Naczelnik, Wydział Zarządzania Kryzysowego*

2

Cyberbezpieczeństwo

Kamil Porębiński

3

Kryzys geopolityczny i migracje

Radostaw Guz - *Dyrektor Stowarzyszenie Lubelskiego Obszaru Metropolitalnego*

4

Bezpieczeństwo energetyczne

Tomasz Bońdos - *Dyrektor Zespołu ds. Zarządzania Energią, Bydgoszcz*

5

Adaptacja do zmian klimatu

Ryszard Gajewski – *Prezes Zarządu, Gdańskie Wody*

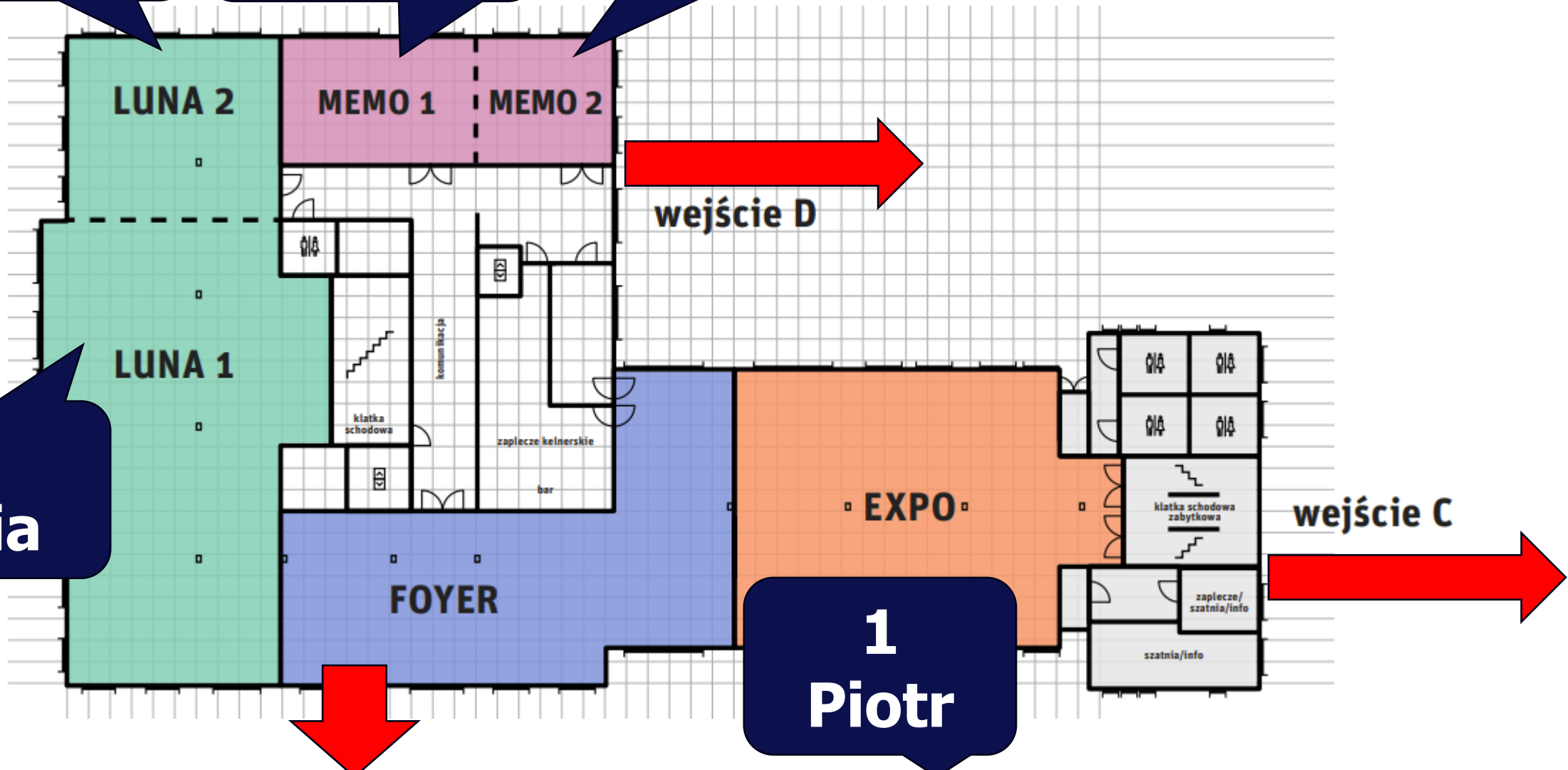
4
Karolina

3
Dorota

2
Justyna

5
Ania

1
Piotr



Coffee Break



10:30
to
11:00



**Workshop 3: Resources, Tools and
Actions to Strengthen Resilience
and Crisis Management in ITI**

**Warsztat 3: Zasoby, narzędzia i
działania dla rezyliencji i zarządzania
kryzysowego w ZIT w ZIT-ach**



Key Takeaways from Workshop 2 & 3

**Plenarne podsumowanie
Warsztatu 2 & 3**

The slide features a decorative background with teal and dark blue lines. A teal line starts at the top right, moves left, then down, then left again, ending in a dark blue line that runs horizontally across the top. Another teal line starts at the bottom left, moves right, then up, then right again, ending in a dark blue line that runs horizontally across the bottom. A third teal line starts at the bottom center, moves up, then right, then up again, ending in a dark blue line that runs horizontally across the bottom. The text is centered and uses a mix of bold, teal, and dark blue colors.

TEMAT 1

Zarządzanie kryzysowe i rezyliencja w MOF

TOPIC 1

Crisis Management and Resilience in FUAs

The background features abstract, stylized lines in teal and dark blue. A teal line starts at the top right, moves left, then down, then left again, ending in a dark blue line. Another teal line starts at the bottom center, moves up, then left, then down, ending in a dark blue line. A dark blue line starts at the bottom left, moves up, then right, then down, ending in a teal line. A dark blue line starts at the bottom right, moves left, then up, then left again, ending in a teal line.

TEMAT 2
Cyberbezpieczeństwo

TOPIC 2
Cybersecurity

The background features abstract geometric shapes in teal and dark blue. A teal line starts at the top right, moves left, then down, then left again, ending in a dark blue line. Another teal line starts at the bottom left, moves right, then up, then right again, ending in a dark blue line. A third teal line starts at the bottom center, moves right, then up, then right again, ending in a dark blue line. A dark blue line starts at the bottom left, moves right, then up, then right again, ending in a teal line.

TEMAT 3

Kryzys geopolityczny i migracje

TOPIC 3

Geopolitical crisis and migration



TOPIC 4
Energy Security

TEMAT 4
Bezpieczeństwo energetyczne



TOPIC 5
Climate Adaptation

TEMAT 5
Adaptacja do zmian klimatu

**Share your
feedback with us**



Thank you!



Conclusion & Next Steps

Wnioski i dalsze kroki



Konrad Saganowski

*Naczelnik wydziału w Ministerstwo
Funduszy i Polityki Regionalnej*



Paul Janson

*Capacity Building Officer,
European Urban Initiative*



**And now
what...?**

**Other capacity building
opportunities with EUI**

The EUI capacity building trio

57 approved C2C Exchanges
Call continuously open

City-to-city
exchange

Peer
review

7 Peer Reviews so far
April 2025: Alba Iulia, RO
May 2025: Sormland, SE, many

**OPEN CALL UNTIL 1st MAY
2025!**

Event

23-24 April: CB Event in Latvia

17-19 June: CITIES FORUM in Krakow

Let's spread the fire together!





City to City exchange

Two cities joining to apply to a EUI City to City exchange



City with a challenge

Is your city facing a specific policy challenge about Sustainable Urban Development? Are you looking for a peer to receive knowledge and expertise from? Create a challenge on the Urban Matchmaker and find a peer city and apply together to receive EUI support.

 **Create a challenge**
& match with a city 

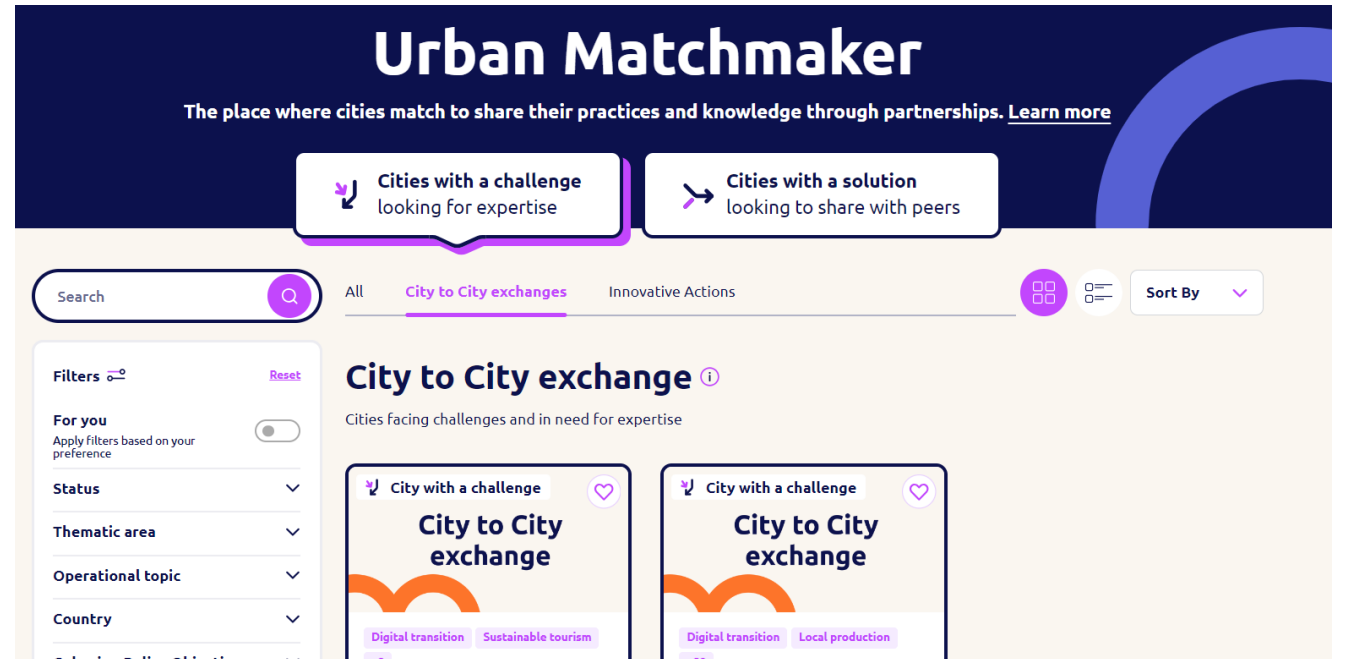
[See existing urban solutions](#)

City with a solution

Do you have expertise on a specific urban challenge your city encountered in the past? Publish your solution on the Urban Matchmaker and find a peer city who is experiencing a similar challenge and apply together for a City-to-City exchange to EUI.

 **Share your urban solution**
& match with a city 

[See existing urban challenges](#)







Urban Matchmaker

The place where cities match to share their practices and knowledge through partnerships. [Learn more](#)


Cities with a challenge looking for expertise


Cities with a solution looking to share with peers


Search All [City to City exchanges](#) Innovative Actions   Sort By 


Filters  [Reset](#)


For you Apply filters based on your preference

Status 

Thematic area 


Operational topic 

Country 

Coherence Policy Objectives 


City to City exchange

Cities facing challenges and in need for expertise

City with a challenge 

City to City exchange

Digital transition Sustainable tourism

City with a challenge 

City to City exchange

Digital transition Local production

[Click here](#) to access the Urban Matchmaker



THANK YOU!

13:00
to
14:00



Lunch